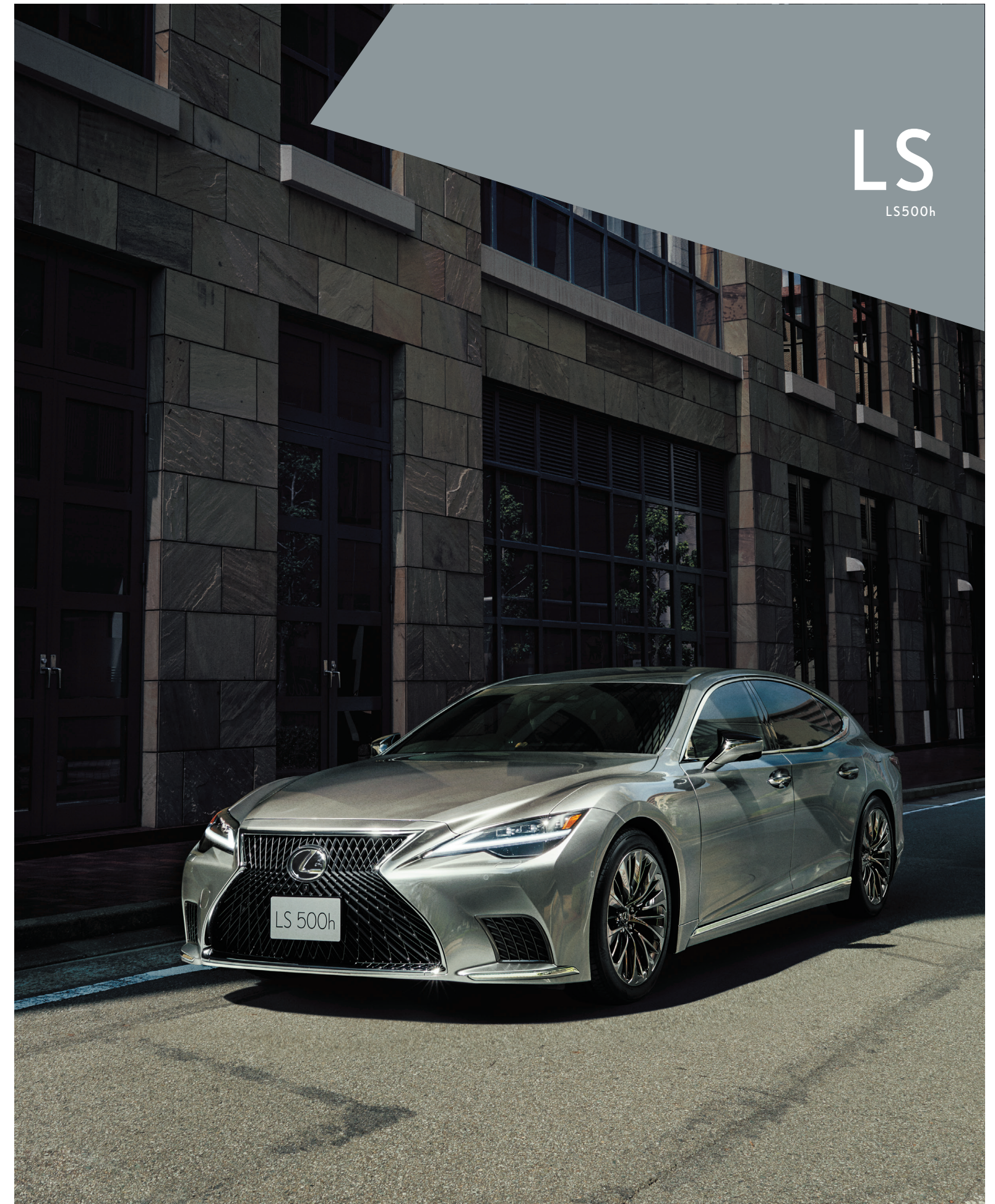




lexusindia.co.in
Lexus Owner's Desk, 24/7
+91 76187 79898
1800 300 53987[1800 300 LEXUS]

LS





Note: Vehicles pictured and specifications detailed in this catalog may vary from models and equipment available in your area. Please inquire at your local dealer for details on the availability of features.









Note: Vehicles pictured and specifications detailed in this catalog may vary from models and equipment available in your area. Please inquire at your local dealer for details on the availability of features.



Note: Vehicles pictured and specifications detailed in this catalog may vary from models and equipment available in your area. Please inquire at your local dealer for details on the availability of features.



LEXUS

INTELLIGENCE

SIX

1

CONCEPT



P18

2

DESIGN



P24

3

PERFORMANCE



P29

4

FEATURES



P34

5

SAFETY



P42

6

TAKUMI

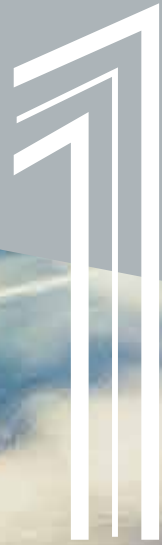


P46

CONCEPT



Befitting the Lexus flagship sedan, the LS realizes a future-focused vision of luxury to create a superior driving experience. It further evolves Lexus DNA to provide refined driving and ride performance with exquisite craftsmanship to shape trendsetting values.



» INTELLIGENCE





The inspired starting point of the LS was to refine every aspect of 'driving performance, quietness, ride, and interior comfort' encoded in the original LS DNA, to give fresh expression and nuance to exceptional Lexus quietness, comfort and peace of mind. These qualities are given emotional expression through an artistic approach to design that shapes the dynamic silhouette. It is deepened

by Takumi craftsmanship which captures the ethereal qualities of moonlight on waves in the unique 'Haku & Nishijin' finishes in the cabin, and enjoyed in the ever-changing moonlit-inspired light and shadow of the sophisticated Gin-Ei Luster exterior finish.



DESIGN



The LS's design gives artistic expression to the dynamic evolution of the Lexus flagship, to create a refined and luxurious presence. It exudes confident freedom of movement, to provide a bespoke ownership experience that will enrich modern lifestyles.



» INTELLIGENCE



EXTERIOR

The LS exudes chic sophistication at first sight, fusing sensual beauty with a low center of gravity to shape a distinctive, confident presence. The beautiful form seamlessly integrates advanced functionality in the flowing lines of the grille and headlamps, highlighted by the ever-changing expression of the extraordinary Gin-Ei Luster finish.



INTERIOR

A refined expression of contemporary luxury, the interior combines a cockpit designed to support simple operation and focused concentration for relaxed confident driving, with sublime comfort for deep relaxation. The subtle Japanese aesthetic and spirit of hospitality of Takumi craftsmanship enrich the inviting and dignified cabin environment.





PERFORMANCE



The relentless pursuit of perfection to create a superior driving experience honed the LS's outstanding response and power, contributing to an emotional performance that heightens driving enjoyment when you choose to drive. Together with the refined and luxurious ride comfort essential to a Lexus flagship often enjoyed as a chauffeur car.



» INTELLIGENCE

Multi material body

To achieve high body rigidity, light weight and excellent safety performance, required optimizing the layout and use of hot-stamp, high-tensile steel for major body components such as the rockers, pillars and roof. To lower the center of gravity and moment of inertia, aluminum was used for the body framework located further from the vehicle's center of gravity, hood, trunk lid, fenders, doors and suspension towers, endowing the body with excellent turning characteristics.



FR (Front engine, Rear wheel drive) platform

The LS takes advantage of the FR platform that Lexus refined for the LC to optimize front-to-rear weight distribution and the moment of inertia. The result is natural, smooth vehicle dynamics when cornering, accelerating and decelerating. The adoption of a low driving position and a layout that keeps the driver's hip point and the vehicle's center of gravity close together minimizes the distance between the driver and the axis of rotation, heightening the driver's feeling of oneness with the car. In this way, the packaging meticulously refines the inertia characteristics to deliver excellent response along with smooth, stable changes in posture during the sequence of movements involved in cornering.

Suspension

To realize high-quality driving and ride comfort befitting the Lexus flagship, the AVS damping force, stabilizer spring rate, and vertical spring of the wheels were fine-tuned to effectively suppress shock and vibration, providing high-quality ride comfort and exceptional quietness, as well as realizing excellent steering response and stable vehicle posture.*1



VDIM (With integrated active steering control) + LDH
VDIM integrates control of engine, braking, steering and other functionality, including the EPS and LDH which controls the steering angle of the front and rear wheels, as a single system, to provide a high level of active safety together with driving pleasure. LDH optimizes the steering angle of all four wheels based on factors such as vehicle speed and steering inputs, to realize ideal vehicle dynamics for the driver's operation. The result is excellent vehicle stability during high-speed driving and nimble steering response in mid-speed driving on surfaces such as mountain roads.*2

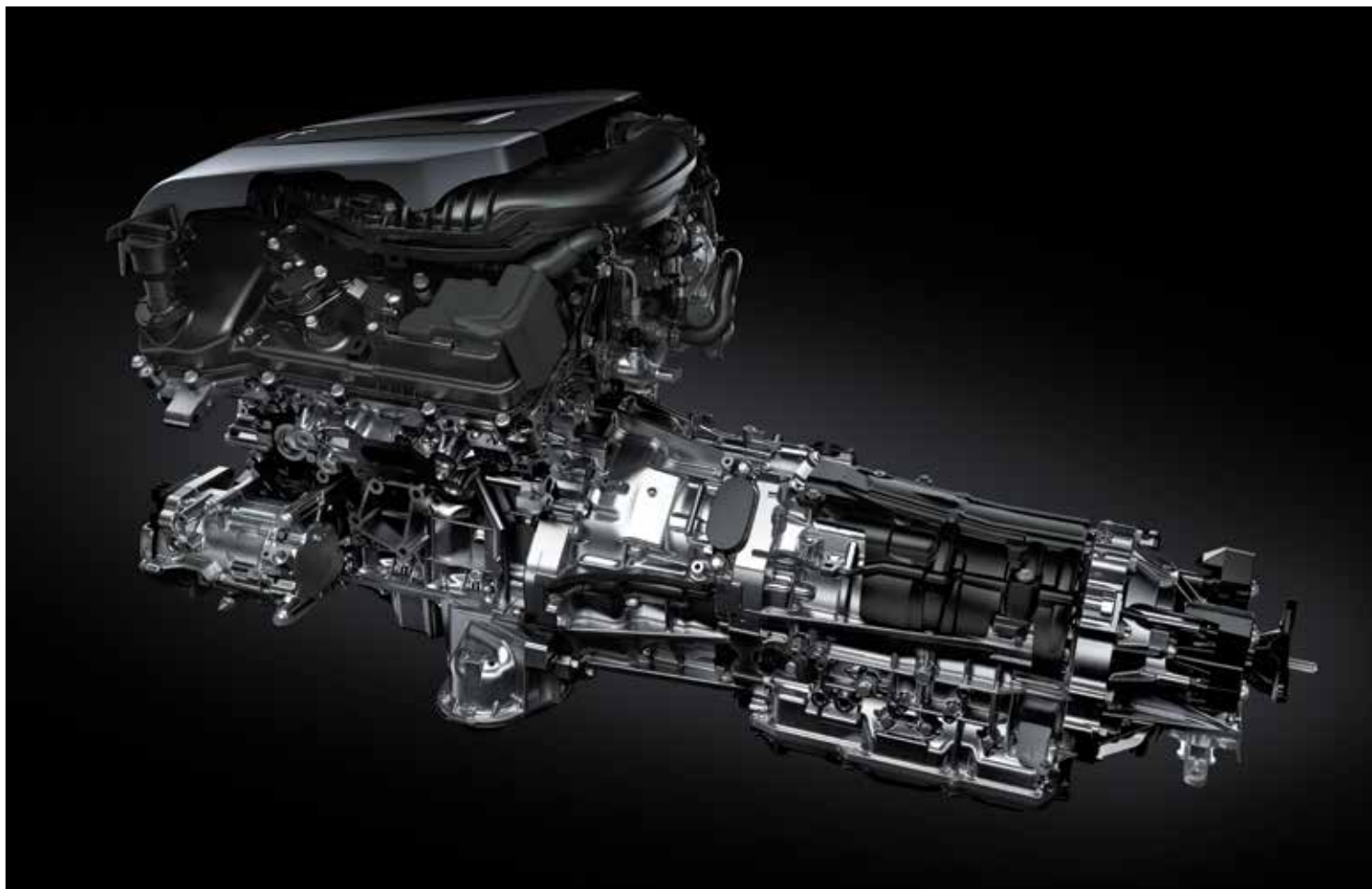


Drive mode select

Drive mode select provides integrated control of multiple systems to let you tune performance to suit your driving style. You can select and change between five modes: Normal, Eco, Comfort, Sport S and Sport S+ Modes. In addition, Custom Mode enables drivers to set their preferred settings for the powertrain, chassis and air conditioning.

*1 AVS: Adaptive Variable Suspension. *2 VDIM: Vehicle Dynamics Integrated Management. LDH: Lexus Dynamic Handling system. EPS: Electric Power Steering.

Note: Vehicles pictured and specifications detailed in this catalog may vary from models and equipment available in your area. Please inquire at your local dealer for details on the availability of features.



3.5-liter V6 engine (8GR-FXS)

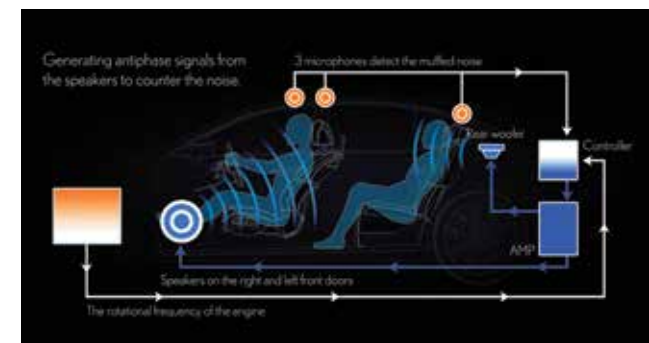
The hybrid system's V6 engine integrates advanced technologies that include Dual VVT-i and D-4S fuel injection system to generate both powerful driving and outstanding environmental performance. Analysis of big data on 'everyday acceleration' inspired fine-tuning of drive force control to enhance response and power output, delivering a quick boost in torque even when the accelerator is pressed less than half way, for smooth quiet acceleration enjoyed most often in daily driving conditions.*



Multi Stage Hybrid System

The Multi Stage Hybrid System's 10-speed shift control optimizes the hybrid system's characteristics to provide exceptional driving performance, with a direct and continuous acceleration feel that matches the increase in engine rpms, together with excellent shifting rhythm. Increasing battery assist

during acceleration at often-used speeds experienced in city driving significantly enhances smooth start-up acceleration. At the same time, lower engine rpms during start-up acceleration enhance quiet operation.



Engine sound

ANC (Active Noise Control) and ESE (Engine Sound Enhancement) were fine-tuned to enhance the flagship-level quietness in the cabin, and at the same time enliven driving enjoyment. ANC suppresses engine boom at a wide range of engine speeds, while ESE tunes the sound of engine acceleration and deceleration to provide a powerful and linear sporty engine note.

* VVT-i: Variable Valve Timing-intelligent. D-4S: Direct injection 4 stroke gasoline engine. Superior version.

Note: Vehicles pictured and specifications detailed in this catalog may vary from models and equipment available in your area. Please inquire at your local dealer for details on the availability of features.

FEATURES



Meticulous attention was paid to further refining the flagship comfort, utility and safety of each element to make every drive in the LS time well spent. Fusing craftsmanship to create a modern expression of luxury, imbues an enriching experience to be enjoyed with confidence and peace of mind.



» INTELLIGENCE



It is in the pleasurable discovery of the details blending superb functionality with exquisite beauty that you come to appreciate the special values Lexus hospitality provides. The character lines of the bold silhouette enlivened by the ever-changing beauty of the Gin-Ei Luster finish, seamlessly flow into the slim headlamp unit that integrates 3-eye Bi-Beam LED headlamps and the hospitality illumination of the DRL.

It is enjoyed in the refined comfort of the seats, from deep stitch points to the use of low-resilience urethane in the seat pads. It is heightened by touch screen displays in the front and rear that provide intuitive control of the audio, navigation, climate control and other systems, to put personalization of a comfortable environment at your fingertips.*1



Headlamps

A slim 3-projector lamp unit helps provide excellent night-time visibility for reliable, stress-free driving. The L-shaped LED DRL in the middle provide fade-in and fade-out 'omotenashi' illumination after the doors are unlocked and locked.*1



Hands-free power trunk lid

Even if both hands are full, when carrying the Electronic Key you can open and close the trunk lid automatically by moving your foot under the rear bumper.



Moonroof

An outer sliding mechanism slides the glass above the roof to create a spacious open feeling in the rear seats.

Rear combination lamps

The distinctive L-shaped rear combination lamps blend harmonious form, heightened by the use of Piano Black trim, with advanced functionality. The sequential turn signal lamps illuminate in a sharp, well-defined flow that intuitively communicates the turning direction to following vehicles. Aero stabilizing fins integrated into the design contribute to excellent handling stability. All lamps, including on the trunk lid, use LEDs.



Trunk space

The LS's refined packaging realizes both a beautiful silhouette and ample luggage capacity. In hybrid models the battery is located behind the rear seats, creating 430 liters of luggage space.



Door mirrors

The curvature of the mirror was optimized to enhance rear visibility in a compact size. Sculpting the inside of the mirror visor gives it a sharp shape, and creates more space between the mirror and front pillar, enhancing aerodynamic performance and reducing wind noise.

*1 DRL: Daytime Running Lamps.

Note: Vehicles pictured and specifications detailed in this catalog may vary from models and equipment available in your area. Please inquire at your local dealer for details on the availability of features.



22-way power rear seats and power ottoman

The power rear seats use motors and a pneumatic system that inflates and deflates air bladders to make fine-grained adjustments to every aspect of the seats. The rear seat behind the front passenger's seat has a maximum 102cm of foot room and a power ottoman that provides generous support to the lower legs so the occupant can relax in refined comfort. In addition, three position presets allow the occupant to choose their preferred posture. 'Business' is the normal position. 'Entertain' reclines the seatback to a relaxing angle and positions the front passenger's seat for optimal viewing of the rear seat display. 'Relax' moves the front passenger's seat to the forward-most position and deeply reclines the rear seatback to optimize the rear seat space.



Rear multi-operation panel

The multi-operation panel display inset in the rear center armrest puts intuitive control of the audio, air-conditioning, seat adjustments and relaxation functions, sunshades and lighting at rear passengers' fingertips. An intuitive graphic interface that groups frequently used functions enhances easy operation.

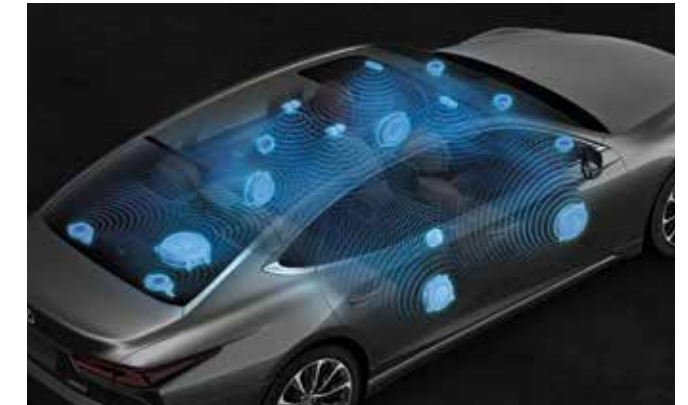
Rear seat entertainment system

The rear seat entertainment system includes 29.5 cm (11.6-inch) displays that automatically adjust with the seat position to maintain an excellent angle for easy viewing, a Blu-ray Disc player, SD card slot, and an HDMI jack that enables the connection of a computer or other devices. Rear seat passengers can also enjoy videos, music and other media stored on mobile devices using Miracast or DLNA (Digital Living Network Alliance).



Mark Levinson QLI Reference Surround Sound System

Since 1972, Mark Levinson has been dedicated to uncompromising audio fidelity as the audio reference standard. The LS's 16-channel 3D surround sound system drives 23 speakers. The 7 Unity speakers, ceiling speakers and QLI (Quantum Logic Immersion) surround technology fill the cabin with uniform sound quality, enveloping the listener in natural realistic sound with the precise positioning of a live sound stage, excellent separation and dynamic reproduction of sound sources.



EMV (Electronic Multi Vision) touch display

The 31.2 cm (12.3-inch) EMV touch display supports intuitive control of the navigation, audio and other systems by directly touching the screen like a smartphone, or using the Remote Touch pad integrated in the center console. The display is carefully positioned for fingertip operation while maintaining a forward line of sight and driving posture. It is Apple CarPlay and Android Auto compatible for easy interaction with smartphone supported Apps.



Heater and ventilation switches/console box

Switches for the seat heaters, heated steering wheel, seat ventilation and rear sunshade are integrated into the upper console, enabling easy operation while maintaining a relaxed driving posture. Integrated AUTO indicators illuminate when AUTO functions are activated, for quick recognition of operational status. The convex shape of the heaters witches enables easy, intuitive operation. The concave shape of the center console box lid lets you store a smartphone inside without opening the lid, enhancing convenience. The depth of the storage space was carefully designed for both smooth shift lever operation and easy access to the smartphone.



Power sunshades (Rear doors, rear quarter windows and rear window)

The rear window sunshade covers the entire window on both sides with no gaps. Operation of the rear quarter window sunshades is linked with the rear door window sunshades to provide comfort and privacy in the rear seats.



28-way power front seats

The power seats combine motors and a pneumatic system to allow fine-grained adjustment of the seat to support every part of the body. Optimizing support for different physiques to provide a feeling of unity with the car, the shoulder, hip and cushion side support contribute to stable body positioning during braking and cornering. Frequently used functions such as slide and recline, together with headrest up and down, are controlled using switches located on the side of the seats. Adjustment of both seats can be fine-tuned using the EMV display. The driver also has independent control of the front passenger seat to adjust the seat for the comfort of rear seat passengers.



Front refresh seats

Air bladders integrated into the seatback and seat cushion are inflated to apply pressure from the occupant's back to the thighs, contributing to a feeling of relaxation. Programs can be selected for the entire body as well as particular areas (Upper Body, Lower Body and Lumbar).

Relaxation seats with warming function (Outboard rear seats)

Air bladders integrated into the seat cushion and seatback are inflated to apply pressure to the occupant's back and thighs. The system also utilizes dedicated heaters to promote relaxation through repeated warming and cooling. A total of seven programs for both the entire body (Full Body Refresh, Full Body Stretch and Full Body Simple) and specific parts of the body (Upper Body, Lower Body, Shoulder and Lumbar) can be selected.



Lexus Climate Concierge

Lexus Climate Concierge coordinates with the 4-zone independent temperature control to automatically control the auto air conditioner with the seat heaters, seat ventilation and steering wheel heater to provide optimal comfort for each occupant. The body surface temperature of occupants is detected by IR (Infrared Rays) matrix sensors to quickly provide the optimal level of comfort for all occupants. It also detects sunlight in the early morning and at sunset and controls the vehicle's climate control system to maintain comfort.



Easy Access Buckles (Front seats)

To make the front seatbelts easy to use, the seatbelt buckle lifts up when the door is opened and then moves back down once the seatbelt is fastened.



Electronically controlled air suspension (With access mode)

In addition to the vehicle height adjustment function which can be switched between Normal and High settings, access mode automatically raises the vehicle to make ingress and egress easy.*1



Power easy access system

The front seats feature auto slide-away and return functions, together with auto lift-up function (Driver's seat only) and cushion side-away function. For easy access, auto lift-up raises the seat lifter when the driver gets out and then returns it to the original seat position when the driver gets in. Cushion side-away opens the outboard side cushion supports to reduce the pressure on the thighs while getting in and out.*2

*1 To use access mode or to operate the air suspension while stopped requires changing the function settings.
*2 To use auto-lift-up requires changing the easy access system settings.

Note: Vehicles pictured and specifications detailed in this catalog may vary from models and equipment available in your area. Please inquire at your local dealer for details on the availability of features.

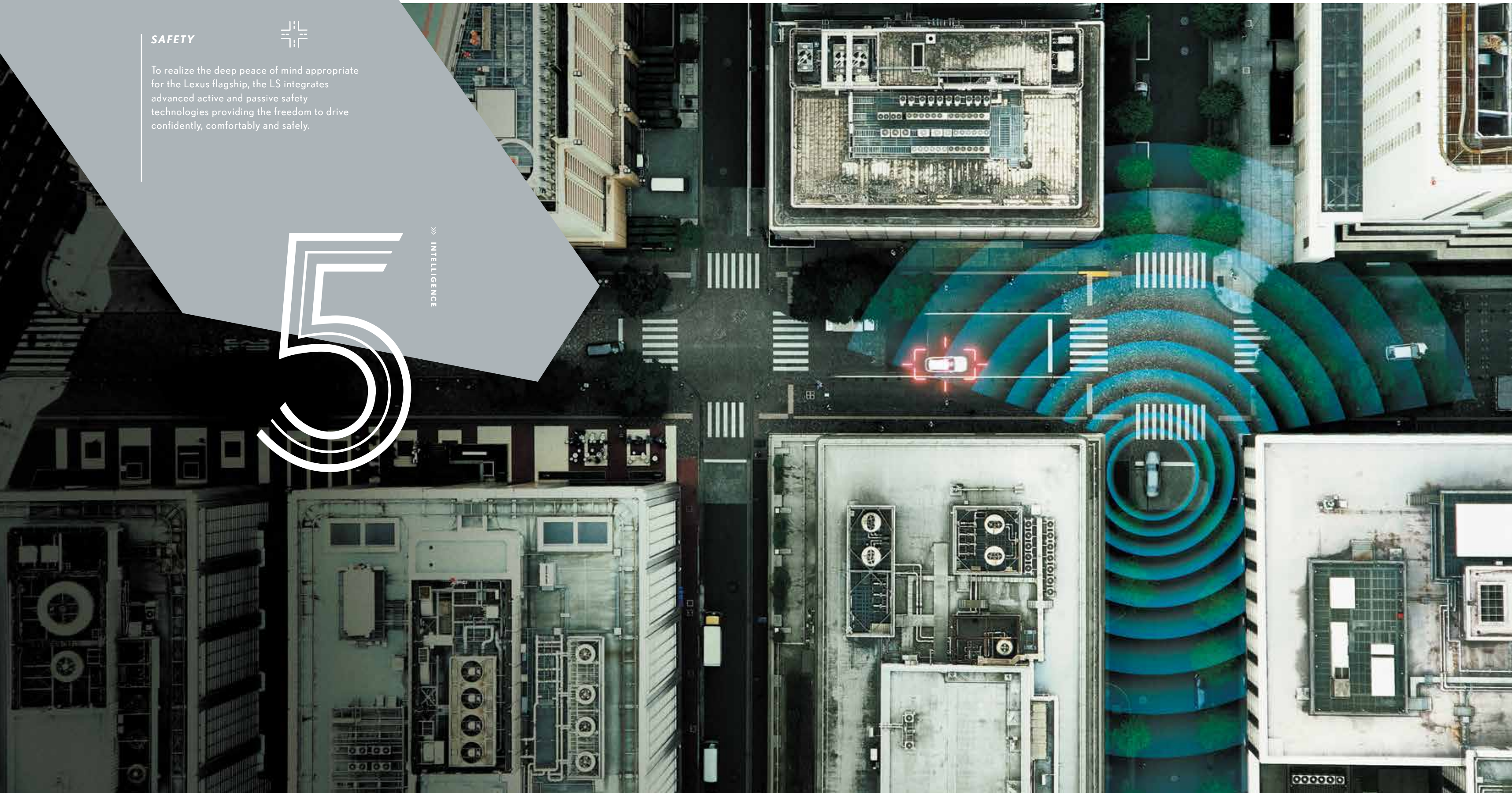
SAFETY



To realize the deep peace of mind appropriate for the Lexus flagship, the LS integrates advanced active and passive safety technologies providing the freedom to drive confidently, comfortably and safely.



» INTELLIGENCE





Large color head-up display

The system helps the driver intuitively understand warnings and take action to avoid potential hazards with animations and information projected on the large 61 cm (24-inch) (60x15cm) display. The screen is divided into different areas to effectively bring information to the driver's attention including cautions and warnings, driving support, road signs, vehicle speed, navigation and other information.



Automatic rear seat reclining

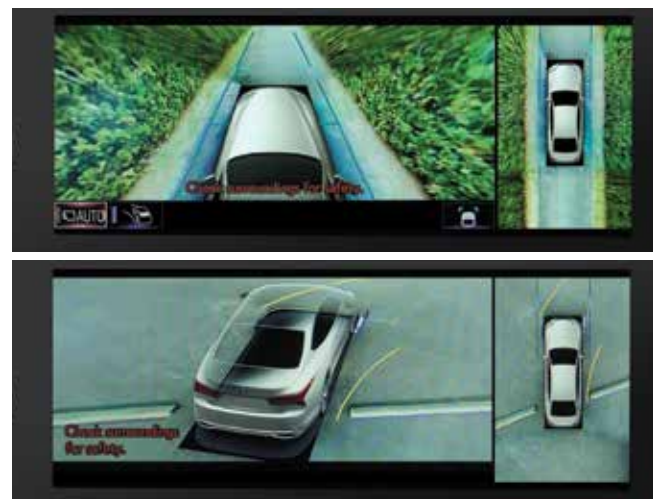
When the rear seat is unoccupied, it automatically reclines in tandem with shift operation. If the headrest is raised, it also lowers to provide a wide field of view in the interior mirror.

Panoramic View Monitor

Video that provides the driver with a bird's-eye view of the vehicle on the 31.2 cm (12.3 inch) EMV touch display in real time helps the driver to check conditions around the vehicle that are difficult to see.*1

Side Clearance View: Helps the driver to check safe clearance to the side of the vehicle.

Cornering View: Helps the driver to check clearance when turning left or right on a narrow road. When the Side Clearance View is active, the Cornering View is automatically displayed in response to steering operation.*1



SRS (Supplemental Restraint System) airbags

The LS features dual-stage SRS airbags (Front seats), SRS knee airbags (Front seats), SRS side airbags (Front and outboard rear seats) and SRS curtain shield airbags (Front and rear seats). SRS seat cushion airbags (Outboard rear seats) are also available for the power rear seats.*2

*1 Pedestrians, obstacles and other objects may appear different when displayed on the screen. Be sure to visually check your surroundings before you proceed.

*2 The SRS airbags are supplemental devices to be used with the seatbelts. The driver and all passengers in the vehicle must wear their seatbelts properly at all times. Never install a rear-facing CRS (Child Restraint System) on the front passenger's seat. For a forward-facing CRS, it is recommended you use it in the rear seats. Please do not use accessories for the seats which cover the parts where the SRS side airbags should inflate. Such accessories may prevent the SRS side airbags from activating correctly, causing serious injury (Lexus genuine seat covers are specifically designed for models equipped with the SRS side airbags. To find out about availability in your area, please inquire at your local dealer). The photo shows all the SRS airbags activated for display purposes only (the SRS side and curtain shield airbags only inflate on the side of the collision in an actual accident). For details on these and other important safety features, be sure to read the Owner's Manual carefully.

Note: Vehicles pictured and specifications detailed in this catalog may vary from models and equipment available in your area. Please inquire at your local dealer for details on the availability of features.

TAKUMI



Our Takumi craftsmen strive for perfection in every aspect of their work, actively seeking enhancements by applying constant care and dedication to their craftsmanship, blending their craftsmen's skills with the power of technology to better anticipate the future.

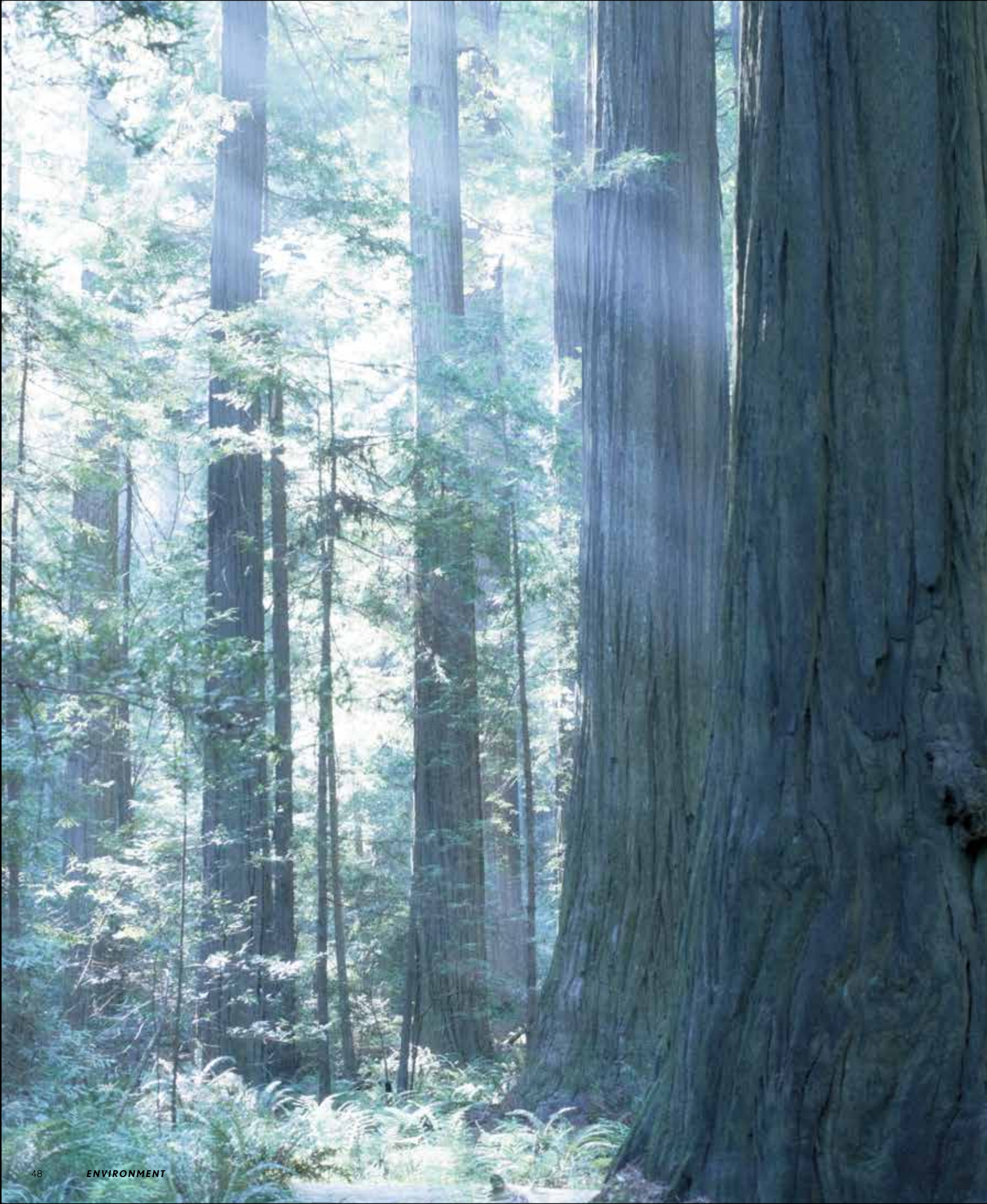


» INTELLIGENCE



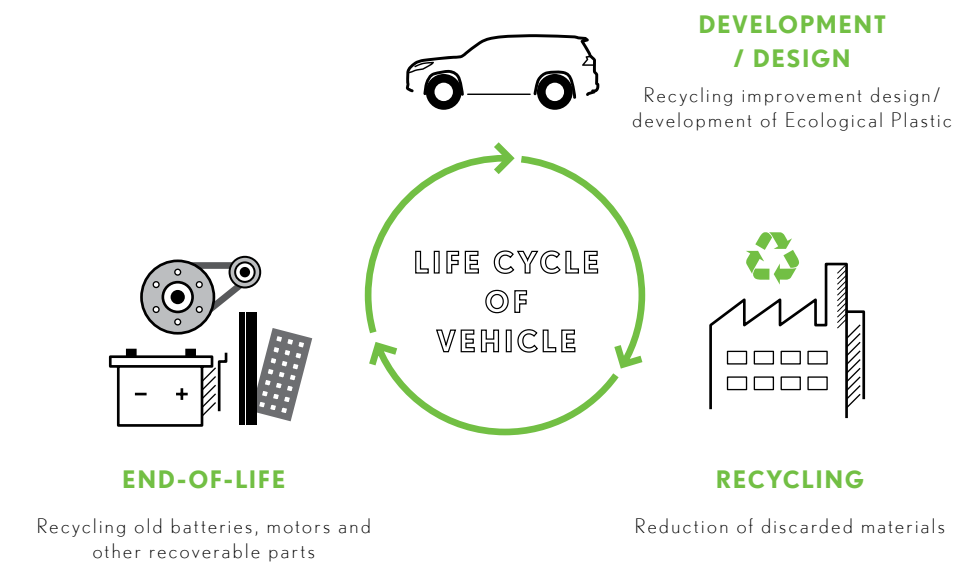
Every Lexus is based on an uncompromising approach to creating premium automobiles. Inspired by our 'Yet' philosophy, we seek innovation in every facet of engineering through a sophisticated fusion of seemingly incompatible ideas such as 'high performance yet high fuel efficiency'. In addition, unique Lexus styling is born of our L-finesse design language, a fine balance of 'Leading-edge' and 'finesse', so that every Lexus is not only captivating and luxurious, but also highly refined. Finally, every new Lexus model is also measured against a set of internal standards covering design, performance, specifications and equipment, to confirm it is distinctive and worthy of the Lexus emblem.

This pursuit of perfection is evident at every stage of the manufacturing process. Every Lexus vehicle is created with a masterful skill and attention to detail inspired by both traditional artisanship and state-of-the-art engineering. For example, at the Tahara plant in Japan, precision components made using leading-edge digital technology are assembled and finished by master craftsmen called Takumi, whose technical expertise and sure senses are honed by decades of rigorous experience.



LEXUS
ENVIRONMENT

***Our commitment to the environment
is embedded into all our activities
and vehicles.***



At Lexus, sustainability is an enormous challenge that we gladly accept. We are committed to finding better, more efficient ways to contribute to a healthier planet, leading the industry in better business practices. Our focus on the environment drove our development and global leadership of hybrid luxury vehicles, and the knowledge we have gained is applied in all of our vehicles. Our commitment to recovering, recycling and re-using permeates the entire company. To reduce waste to a minimum, we carefully recycle various materials in our offices, factories, and sales facilities, reducing CO₂ levels beyond our achievements on the road.

Specific initiatives to enhance the environment include integrating a keen environment-friendly focus on the entire life cycle of each vehicle, from design and production, through to the recycling of vehicles at the end-of-life. To reduce CO₂ emissions, at the design stage we specify extensive use of plant-derived plastics for components, instead of petroleum-derived plastics. During production, we make repeated use of reusable items, work hard to efficiently use resources to minimize waste, and recycle any waste produced.

EXTERIOR & INTERIOR
COLORS

The LS's color design applies a refined expression of Japanese craftsmanship and the 'omotenashi' spirit of hospitality to add a grace note to an advanced and refined presence. It inspires the light and shadow of the Gin-Ei Luster exterior color, and the subtle beauty of moonlight on the sea in the Haku & Nishijin upholstery and ornamentation in the cabin.



Sonic Quartz <085>



Black <212>



Sonic Titanium <1J7>



Red Mica Crystal Shine <2R1>



Manganese Luster <1K2>



Sonic Agate <3U3>



Gin-Ei Luster <1L3>



Sonic Iridium <1L2>



Deep Blue Mica <8X5>



Graphite Black Glass Flake <223>



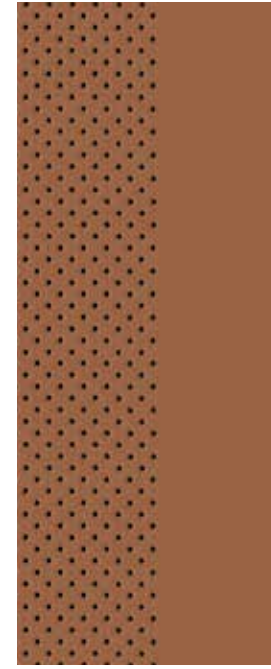
50.8 cm (20-inch) Aluminum wheels

<L-ANILINE>



Ocher

<SEMI-ANILINE LEATHER>



Hazel



Black



Black

Note: Vehicles pictured and specifications detailed in this catalog may vary from models and equipment available in your area. Please inquire at your local dealer for details on the availability of features.

<L-ANILINE>



Crimson & Black (Trim: Laser Cut Special Black)



Chateau

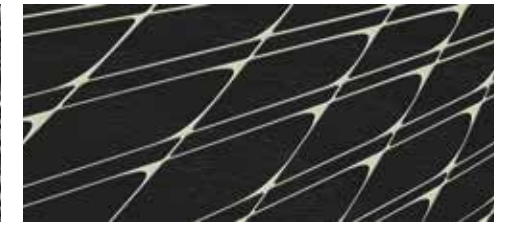
<TRIM>



Haku



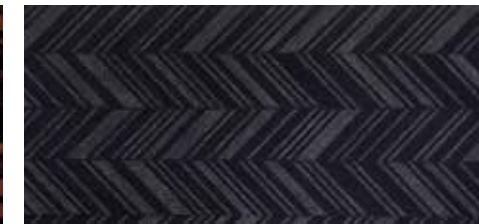
Kiriko (Cut Glass)



Laser Cut Special Black



Art Wood (Organic)



Herringbone

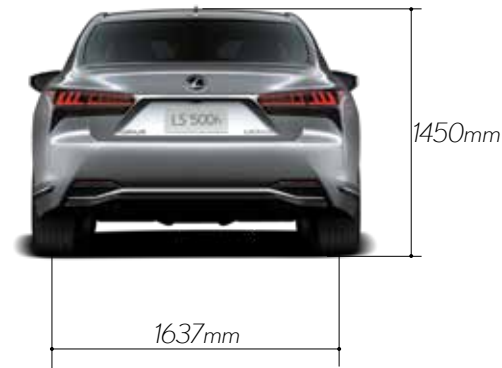
<LS COLOUR SELECTION MATRIX>

| SEATING MATERIAL | INTERIOR COLOURS | INTERIOR TRIM | | | | | |
|--------------------------|------------------|----------------------|-------------------|----------------------|------|-------------------|-----------|
| | | Semi Aniline Leather | | | | Fabric - High | Cut Glass |
| | | Art Wood Organic | Laser Cut Special | Art Wood Herringbone | Haku | Laser Cut Special | |
| Luxury (Semi Aniline) | Chateau | X | X | ● | X | X | X |
| | Black | X | ● | X | X | | |
| | Crimson & Black | X | ● | X | X | | |
| | Hazel | ● | X | X | X | | |
| Ultra Luxury (L Aniline) | Black | X | | | | ● | X |
| | Ocher | X | | | | ● | X |
| Nishijin | Black | X | X | X | ● | X | X |
| Kiriko | Crimson & Black | X | X | X | X | X | ● |
| | Black | X | X | X | X | X | ● |

● Available X Not Available

Note: Vehicles pictured and specifications detailed in this catalog may vary from models and equipment available in your area. Please inquire at your local dealer for details on the availability of features.

<DIMENSIONS>



Toyota Motor Corporation reserves the right to alter any details of specifications and equipment without notice. Details of specifications and equipment are also subject to change to suit local conditions and requirements. Please inquire at your local dealer for details of any such changes that might be required for your area. Note: Vehicles pictured and specifications detailed in this catalog may vary from models and equipment available in your area. Vehicle body color might differ slightly from the printed photos in this catalog.

LS 500h SPECIFICATIONS

| | | |
|-------------------------|---|---|
| Dimensions | Overall L x W x H (mm) | 5235 x 1900 x 1450 |
| | Wheelbase (mm) | 3125 |
| | Ground Clearance (mm) | 147 |
| | Tread Front / Rear (mm) | 1631 / 1637 |
| Engine | Type | 8GR-FXS - EURO 6 - V-TYPE |
| | Displacement (cc) | 3456 |
| | Max Output | 218 kW / 6600 rpm |
| | Max Torque | 350 Nm / 5100 rpm |
| Motor Generator | Max Output | 1319kW |
| | Max Torque | 300Nm |
| | Total System Output | 264kW |
| Chassis & Transmission | Suspension | AIR + Adaptive Variable Suspension + Ride Height Control |
| | Pitch & Bounce Control | Yes |
| | Brake | Front / Rear Disc Brake - 45.7 cm (18 inch) / 43.2 cm (17 inch) |
| | Tire | 245/45RF20 (Run Flat) |
| | Transmission | Multi Stage Hybrid |
| Exterior Features | Headlamp | 3 LED with Auto Levelling & Cleaner |
| | LED DRL, Clearance & Cornering Lamp | Yes |
| | Turn Signal Lamps | LED Sequential |
| | Luggage Door Kick Sensor | Yes (Power trunk lid hands free operation) |
| | Soft Door Close | Yes - Auto & Easy Closure Doors |
| | Wiper Blade | Aqua Arm Wiper Blades |
| Interior Features | Moon Roof | Yes |
| | Seat Cover Material | Semi Aniline Leather / L Aniline Leather |
| | Steering Wheel | Wood + Leather Pad + Heater |
| | Steering | EPS |
| | Electro Multi Vision Display | 31.2cm (12.3 inch) EMV Screen |
| | Clearance & Back Sonar | Yes |
| | Cruise Control | Yes |
| Comfort & Convenience | Back Guide Monitor | Yes - Panoramic View Monitor |
| | Smartphone Connectivity (Wireless Apple Car play, Wired Android Auto) | Yes |
| | Dynamic Voice Recognition | Yes |
| | Profile Function | Yes |
| | Front Seat Headrest | Power + Butterfly + Fall Down |
| | Rear Seat Headrest | Power + Memory + Butterfly |
| | Front Seat Slide | Driver 260mm & Passenger 420 mm |
| | Front Seat Adjuster | Memory + Cushion Length Adjuster + 28-way adjustable |
| | Rear Seat Adjuster | Power + Ottoman + 22-way adjustable |
| | Sunshade *1 | Power Back + Rear Side + Quarter |
| | Seat Massage Function *2 | Front + Rear |
| | Seat Heater | Front + Rear |
| | Seat A/C | Front + Rear |
| | Air Conditioner *3 | Lexus Climate Concierge - Auto 4 Zone + IR Sensors |
| | Drive Mode Select | 6 Modes (Normal / Eco / Comfort / Custom / Sport S / Sport S+) |
| | Minus ion generator | Yes (With Nano-e) |
| | Navigation | Yes |
| Touchscreen Audio *4 | Mark Levinson 23 Speakers - 2400 Equivalent Total Watts | |
| Smartphone connectivity | Apple Carplay & Android Auto | |
| Rear Seat Entertainment | Dual RSE Monitors - 29.5 cm (11.6 inch) HD | |
| Safety & Security | Anti Theft System | Immobilizer + Siren + Intrusion Sensor + Inclination Sensor |
| | ABS | Yes |
| | Brake | Front 45.7 cm (18 inch) + Rear 43.2 cm (17 inch) |
| | Tire Inflation Pressure Warning | Yes |
| | Vehicle Stability Control (VSC) | Yes |
| | Hill Assist Control (HAC) | Yes |
| | Vehicle Approach Notice | Yes |
| | Adjustable Seat Belt Anchorage | Driver & Passenger |
| | Front Seat Belt | ELR (Emergency Locking Retraction) + TR (Tension Reducer) + Pretensioner + Force Limiter + Easy Access Buckle |
| | Rear Seat Belt | ELR (Emergency Locking Retraction) + TR (Tension Reducer) + Pretensioner + Force Limiter |
| | Airbags | 14 Airbags |
| Head Up Display | 600mm x 150 mm | |

Note: Please inquire at your local dealer for details on the availability of features.