



PORSCHE



The new Macan

Choose Thrilling



The models featured in this publication are approved for road use in Germany. Some items of equipment are available as extra-cost options only. The availability of models and options may vary from market to market due to local restrictions and regulations. For information on standard and optional equipment, please consult your Porsche Centre. All information regarding construction, features, design, performance, dimensions, weight, fuel consumption and running costs is correct to the best of our knowledge at the time of going to print (09/2020). Porsche reserves the right to alter specifications, equipment and delivery scopes without prior notice. Colours may differ from those illustrated. Errors and omissions excepted. For the disclaimer in every language, please refer to www.porsche.com/disclaimer

For fuel consumption, CO₂ emissions and efficiency class, please refer to page 115.

إن الطرازات المبينة في هذا الكتيب معتمدة للسير على الطرقات في السوق الألمانية، ولا تتوفر بعض التجهيزات إلا كخيارات مقابل كلفة إضافية. وقد يختلف توفر الطرازات والخيارات بين سوق وأخرى نظراً للقيود والأحكام المحلية. للحصول على معلومات حول التجهيزات القياسية والاختيارية، يُرجى استشارة مركز بورشه الأقرب إليك. إن كل المعلومات المتعلقة بالبنية والميزات والتصميم والأداء والأبعاد والوزن واستهلاك الوقود وكلفة التشغيل هي صحيحة في وقت الطباعة (2020/09). وتحتفظ بورشه بحق إجراء تعديلات على المواصفات والتجهيزات ومُهل التسليم بدون إشعار مسبق. قد تختلف الألوان عن تلك المبينة. السهو والخطأ جائزان في حال حدوثهما. للاطلاع على نصوص إخلاء المسؤولية باللغات الأخرى، يرجى زيارة www.porsche.com/disclaimer

Die dargestellten Fahrzeugmodelle zeigen die Ausstattung für die Bundesrepublik Deutschland. Sie enthalten zum Beispiel auch Individualausstattungen, die nicht zum serienmäßigen Lieferumfang gehören und nur gegen Aufpreis erhältlich sind. In verschiedenen Ländern sind aufgrund länderspezifischer Bestimmungen und Auflagen nicht alle Modelle bzw. Ausstattungen verfügbar. Bitte informieren Sie sich über den genauen Ausstattungsumfang bei Ihrem Porsche Zentrum/Händler oder Ihrem Importeur. Die Angaben über Konstruktion, Lieferumfang, Aussehen, Leistung, Maße, Gewicht, Kraftstoffverbrauch und Betriebskosten entsprechen dem Kenntnisstand zum Zeitpunkt der Drucklegung (09/2020). Änderungen von Konstruktion, Ausstattung und Lieferumfang sowie Abweichungen im Farbton und Irrtümer bleiben vorbehalten. Weitere Informationen sowie den Disclaimer in Landessprache finden Sie auf www.porsche.com/disclaimer

ამ პუბლიკაციაში წარდგენილი მოდელები დამტკიცებულია გერმანიის გზებზე გამოყენებისთვის. აღჭურვილობის ზოგიერთი ელემენტი მხოლოდ დამატებითი ხარჯებით არის ხელმისაწვდომი. მოდელების და ოფციების ხელმისაწვდომობა შეიძლება იცვლებოდეს სხვადასხვა ბაზარზე ადგილობრივი შეზღუდვებიდან და რეგულაციებიდან გამომდინარე. სტანდარტული და დამატებითი აღჭურვილობის შესახებ ინფორმაციის მისაღებად დაუკავშირდით თქვენს პორშეს ცენტრს. ინფორმაცია რომელიც ეხება კონტრუქციას, ფუნქციებს, დიზაინს, დახასიათებებს, გაბარებებს, წონას, სანავის მოხმარებას და საექსპლუატაციო ხარჯებს სწორია, რამდენადაც ჩვენთვის ცნობილია, დაბეჭდვის მომენტისთვის (09/2020). პორშე იტოვებს უფლებას შეცვალოს სპეციფიკაციები, აღჭურვილობა და მიწოდების პირობები წინასწარი შეტყობინების გარეშე. ფურები შეიძლება განსხვავდებოდეს ნაჩვენებისგან. შეცდომები და გამორჩენა გამორიცხულია. ყველა ენაზე პასუხისმგებლობების უარყოფების ნახვისთვის, გთხოვთ მიმართთ www.porsche.com/disclaimer

Modeli, ki so predstavljeni v tej publikaciji, so odobreni za uporabo v cestnem prometu v Nemčiji. Nekateri deli opreme so na voljo le za doplačilo. Zaradi lokalnih omejitev in predpisov se lahko razpoložljivost modelov in možnosti razlikuje glede na trg. Za informacije o standardni in dodatni opremi se obrnite na najbližji center Porsche. Vsi podatki o izdelavi, lastnostih, obliki, delovanju, dimenzijah, teži, porabi goriva in tekočih stroških so bili ob tiskanju te publikacije (09/2020) po našem prepričanju točni. Družba Porsche si pridržuje pravico, da brez predhodnega obvestila spremeni značilnosti ter obseg opreme in dobave. Barve se lahko razlikujejo od barv na slikah. Pridržujemo si pravico do napak in izpustitev. Za izjavo o omejitvi odgovornosti v drugih jezikih obiščite spletno stran www.porsche.com/disclaimer

Los modelos de automóviles mostrados en esta publicación están homologados para su circulación en la República Federal Alemana. La disponibilidad de los modelos, así como el equipamiento ofertado puede variar de un país a otro debido a razones legales y/o regulaciones de carácter local. Para obtener información sobre los modelos y el equipamiento estándar y/u opcional disponible en su país, consulte en su Centro Oficial Porsche. Toda la información relacionada con la fabricación, características, diseño, prestaciones, dimensiones, peso, consumo de combustible y costes de mantenimiento de los automóviles mostrados responden a los datos actualizados en la fecha de impresión del presente documento (09/2020). Porsche se reserva el derecho de realizar modificaciones en las especificaciones, equipamiento y las condiciones de entrega de los automóviles mostrados en esta publicación sin previo aviso. Debido a la técnica de impresión, los colores reales de los automóviles podrían diferir de los mostrados en la presente publicación. Está prohibida la reproducción, en cualquier forma o por cualquier método, de la totalidad o de una parte de esta publicación sin la autorización por escrito de Dr. Ing. h.c. F. Porsche AG. Para acceder a esta publicación en otros idiomas, por favor consulte: www.porsche.com/disclaimer

Các dòng xe mô tả trong ấn phẩm này được phê duyệt sử dụng trên đường tại CHLB Đức. Một số trang thiết bị là tùy chọn tốn phí. Các dòng xe và tùy chọn có sẵn theo từng thị trường do các hạn chế và quy định tại từng địa phương. Để biết thêm thông tin chi tiết về trang bị tiêu chuẩn và tùy chọn, vui lòng liên hệ Trung Tâm Porsche của bạn. Tất cả thông tin về cấu tạo, đặc tính, thiết kế, hiệu suất, kích thước, trọng lượng, mức tiêu thụ nhiên liệu, và chi phí vận hành đều chính xác hết mức có thể tại thời điểm chuẩn bị in (09/2020). Porsche nắm giữ quyền thay đổi thông số kỹ thuật, trang thiết bị và phạm vi phân phối mà không phải báo trước. Màu sắc thực tế có thể khác biệt so với màu được thể hiện trong ấn phẩm. Lỗi và thiếu sót được miễn trừ. Vui lòng truy cập www.porsche.com/disclaimer để biết thêm thông tin chi tiết về việc miễn trừ trách nhiệm theo từng ngôn ngữ.

Os modelos de veículos ilustrados mostram o equipamento para a República Federal da Alemanha. Eles também incluem, p. ex., equipamentos individuais que não fazem parte do fornecimento de série e que estão disponíveis somente com um custo adicional. Devido a determinações e normas específicas dos países, nem todos os modelos ou equipamentos estão disponíveis em diversos países. Informe-se sobre o exato fornecimento no seu Porsche Center/na sua Concessionária Porsche ou no seu importador. Os dados sobre a estrutura, o fornecimento, a aparência, potência, as medidas, o peso, consumo de combustível e os custos de operação correspondem ao estado de conhecimento no momento da impressão (09/2020). Reserva-se o direito de alterações na estrutura, no equipamento e fornecimento, bem como diferenças na cor. Sujeito a erros. O aviso legal em todos os idiomas pode ser encontrado em www.porsche.com/disclaimer

本型錄所列之車型配備為德國市場的標準規格，部份所列配備為必需額外付費的選配項目，由於各國家地區法令與規定有所不同，因此並非所有車型與配備均有銷售，您可逕向您當地的保時捷展示中心／經銷商洽詢當地銷售車款及選用配備的詳情；有關結構、交付範圍、外觀、性能、尺寸、重量、油耗及維修成本的資訊在本型錄印刷時(2020年9月)為正確無誤，保時捷保留逕行更動結構、配備、交付範圍及其他產品資訊之權利，實際顏色與本型錄所示的顏色或許會有些許差異，保時捷不承擔本型錄內容之錯誤或疏失責任。上述免責聲明的各種語言版本請詳見下列網址：www.porsche.com/disclaimer

本型錄所標示之油耗測試值係在保時捷實驗室內，依相關試驗標準於車體動力計上測得，實際道路行駛時，因受天候、路況、載重、使用空調系統、駕駛習慣及車輛維護保養等因素影響，其實際耗油量常高於測試值；台灣經濟部能源局測試值請上網搜尋經濟部能源局網站。

Les modèles photographiés dans la présente documentation (caractéristiques et équipements) sont ceux du marché allemand et correspondent aux normes applicables en Allemagne. Ils comportent par exemple des équipements optionnels avec supplément de prix, et certaines versions ou options ne sont pas disponibles dans tous les pays. Pour tout renseignement sur la disponibilité des options et le programme de livraison définitif, veuillez contacter un des Centres Porsche du Réseau Officiel. Les informations fournies ici sur la conception, la livraison, l'aspect extérieur des véhicules, les performances, les dimensions, le poids, les consommations de carburant ainsi que les frais de fonctionnement et d'entretien sont celles disponibles au moment de l'impression (09/2020). Sous réserve de toute modification dans la conception, l'équipement et le programme de livraison, de toute variation de teintes et de matériaux, ainsi que de toute erreur ou omission. Vous trouverez cette clause de non-responsabilité dans toutes les langues à l'adresse www.porsche.com/disclaimer

Le vetture raffigurate in queste pagine mostrano gli equipaggiamenti previsti per la Germania. Esse sono parzialmente dotate di equipaggiamenti personalizzati che non fanno parte della dotazione di serie e che vengono forniti con sovrapprezzo. In alcuni Paesi non sono disponibili tutti i modelli e tutti gli equipaggiamenti a causa di vincoli e disposizioni di legge. Per ulteriori informazioni sui modelli e sulla precisa dotazione puoi rivolgerti al tuo Centro Porsche. I dati relativi a costruzione, equipaggiamento, forma, prestazioni, dimensioni, peso, consumi e costi di manutenzione delle vetture sono aggiornati al momento della stampa (09/2020). Con riserva di modifiche alla costruzione, all'entità della fornitura e degli equipaggiamenti come pure alla tonalità dei colori. Salvo errori e omissioni. All'indirizzo www.porsche.com/disclaimer è disponibile la dichiarazione di non responsabilità in tutte le lingue.

このカタログに使用されている写真および記載の諸元、寸法、仕様等は2020年9月時点のものであり、日本に導入される車両と一部異なる場合があります。またオプション装備品は、日本に導入されないものも含まれます。また、仕様および装備は予告なく変更する場合があります。掲載の写真等の色は実際と異なる場合があります。詳しい装備や仕様については、ポルシェ正規販売店までお問い合わせください。

Modeli prikazani u ovom izdanju odobreni su za upotrebu na cestama u Njemačkoj. Neki dijelovi opreme dostupni su samo uz dodatnu nadoplatu. Dostupnost modela i mogućnosti može se za različita tržišta razlikovati uslijed lokalnih ograničenja i propisa. Za informacije o standardnoj i dodatnoj opremi obratite se svome Porsche centru. Svi podaci o konstrukciji, značajkama, dizajnu, performansama, dimenzijama, masi, potrošnji goriva i troškovima održavanja prema našim su saznanjima točni u trenutku odlaska u tisak (09/2020). Porsche zadržava pravo na izmjenu specifikacija, opreme i opsega isporuke bez prethodne obavijesti. Boje se mogu razlikovati od prikazanih. Pogreške i propusti isključeni. Izjavu o ograničenju odgovornosti na svim jezicima potražite na adresi www.porsche.com/disclaimer

Šiame leidinyje pateikti modeliai yra patvirtinti naudoti keliuose Vokietijoje. Kai kurios įrangos dalys yra prieinamos tik papildomai apmokant. Dėl vietinių apribojimų ir taisyklių galimi modeliai ir pasirinkimai gali skirtis priklausomai nuo rinkos. Norėdami sužinoti apie standartinę ir papildomą įrangą, kreipkitės į savo „Porsche“ centrą. Visa informacija apie konstrukciją, savybes, dizainą, eksploatacines savybes, matmenis, svorį, degalų sąnaudas ir eksploatacines išlaidas yra teisinga, kiek mums žinoma, ją ruošiant spausdinti (09/2020). „Porsche“ pasilieka teisę be išankstinio įspėjimo keisti specifikacijas, įrangą ir pristatymo apimtį. Spalvos gali skirtis nuo pateiktų iliustracijose. Išimtos klaidos ir praleidimai. Atsakomybės apribojimas visomis kalbomis pateikiamas svetainėje www.porsche.com/disclaimer

Моделите опишани во ова издание се одобрени за употреба на патишта во Германија. Некои ставки од опремата се достапни само како опции со дополнителен трошок. Достапноста на моделите и опциите може да се разликува во зависност од пазарот поради локалните ограничувања и прописи. За информации околу стандардната и изборната опрема, советувајте се со Porsche центарот. Сите информации во врска со конструкцијата, функциите, дизајнот, перформансите, димензиите, тежината, потрошувачката на гориво и трошоците за одржување се точни според нашите најдобри сознанија во времето на печатењето (09/2020). Porsche го задржува правото да ги измени спецификациите, опремата и опсезите на испорака без претходно известување. Боите може да се разликуваат од тие на сликите. Грешките и пропустите се исклучени. За одрекувањето од одговорност на сите јазици, погледнете во www.porsche.com/disclaimer

Modele przedstawione w niniejszej publikacji są zatwierdzone do użytku drogowego. Niektóre elementy wyposażenia występują wyłącznie jako opcje oferowane za dopłatą. Ze względu na lokalne przepisy i ograniczenia dostępność poszczególnych modeli i opcji może być różna w zależności od konkretnego rynku. Aby uzyskać informacje na temat wyposażenia standardowego i opcjonalnego, prosimy o kontakt z najbliższym Porsche Centrum. Wszystkie informacje dotyczące konstrukcji, właściwości, stylistyki, osiągow, wymiarow, mas, zużycia paliwa i kosztow eksploatacji są, zgodnie z naszą najlepszą wiedzą, prawidłowe w chwili publikacji (09/2020). Porsche zastrzega sobie prawo do zmiany specyfikacji oraz zakresu wyposażenia i dostaw bez uprzedzenia. Rzeczywiste kolory mogą różnić się od kolorow przedstawionych na ilustracjach. Zastrzega się prawo do błędow i pominięć. Noty prawne w poszczegolnych językach znajdziesz na stronie www.porsche.com/disclaimer

Modely uvedené v tejto publikácii sú schválené pre premávku na cestných komunikáciách v Nemecku. Niektoré položky výbavy sú k dispozícii iba za príplatok. Dostupnosť modelov a prvkov výbavy sa môže v jednotlivých krajinách líšiť z dôvodu miestnych obmedzení a nariadení. Pre viac informácií o štandardnej a doplnkovej výbave sa obráťte na vaše Porsche Centrum. Všetky informácie týkajúce sa konštrukcie, funkcií, dizajnu, výkonnosti, rozmerov, hmotností, spotreby paliva a prevádzkových nákladov sú podľa našich najlepších znalostí správne v čase odoslania do tlače (09/2020). Spoločnosť Porsche si vyhradzuje právo na zmeny špecifikácií, výbavy a dodania bez predchádzajúceho upozornenia, takisto aj právo na chyby a odchýlky. Farby sa môžu líšiť od tých, ktoré sú vyobrazené. Dokument Zrieknutie sa zodpovednosti v požadovanom jazyku si môžete pozrieť na adrese www.porsche.com/disclaimer

Modelele din această publicație sunt omologate pentru șoselele din Germania. Unele echipamente sunt disponibile doar opțional, contra cost. Disponibilitatea modelelor și opțiunile pot varia de la piață la piață din cauza restricțiilor și reglementărilor locale. Pentru informații privind echipamentele standard și cele opționale, consultați Centrul dvs. Porsche. Toate informațiile privind construcția, caracteristicile, designul, performanțele, dimensiunile, greutatea, consumul de combustibil și costurile de funcționare sunt corecte la momentul tipăririi (09/2020). Porsche își rezervă dreptul de a modifica specificațiile, echipamentele și termenele de livrare fără notificare prealabilă. Culoarele pot fi diferite de cele ilustrate. Erorile și omisiunile sunt exceptate. Pentru precizări legale în fiecare limbă, consultați www.porsche.com/disclaimer

Bu katalogta yer alan modeller Almanya'daki sürüş koşullarına göre test edilerek onaylanmıştır. Bazı donanımlar ekstra ücrete tabi opsiyonel seçenekler olarak sunulmaktadır. Mevcut modeller ve donanım seçenekleri, yerel sınırlamalar ve düzenlemelere bağlı olarak ülkeler arasında farklılık gösterebilir. Standart ve opsiyonel donanımlara ilişkin bilgi için lütfen Porsche Merkezleri ile iletişim kurun. Tüketim, özellikler, tasarım, performans, boyutlar, ağırlık, yakıt tüketimi ve bakım masrafları ile ilgili tüm bilgiler, bu katalogun basıldığı tarihteki bilgiler ile hazırlanmıştır (09/2020). Porsche, önceden bildirimde bulunmaksızın spesifikasyonları, donanım özelliklerini ve teslimat kapsamını değiştirme hakkını saklı tutar. Hata ve ihmaller hariç, renkler resimlerde görülen renklere farklılık gösterebilir. Her dildeki yasal bildiri için lütfen www.porsche.com/disclaimer adresini ziyaret edin.

“In the beginning I looked around and could not find quite the car I dreamed of. So I decided to build it myself.”

Ferry Porsche



The dream of the sports car.

A big dream has to be fought for. And so does a bold vision. The next victory? Rarely will it simply fall into our lap. Often, though, there are innate factors we must first fight against: resistance, conventions, and rigid patterns of thinking.

Whatever we fight for or against, nothing is achieved without passion, grit and determination. Ferry Porsche gave everything for the sports car of his dreams. His dream came true. Not because he hesitated, waited or got lucky. Because he went that extra mile.

This attitude, this fighting spirit, is in every Porsche that we've created since 1948. It's there in every detail and in every race we've won. It's also found in every idea. And in our engineers. Who continually surpass themselves. To achieve the one second that makes the difference between triumph and tears. For the 'Dr. Ing.' in our company name, and to reinvigorate Fascination Sportscar time and time again.

To us, it's never been about extra horsepower alone, but about more ideas per PS. It's about engines that are more efficient, not bigger. It's about a design that follows principles, not trends. It's about sports cars that can be driven day in, day out.

It's only when all these things come together that we can talk of Intelligent Performance – the core of the Porsche brand, and of its future. This is what we are fighting for. Just as we did on day one. For a dream that will forever be in our heart.



- 14 Choose Thrilling
- 16 The Macan concept
- 20 Design
- 32 Drive and chassis
- 48 Porsche Connect
- 58 Comfort and entertainment
- 72 Lighting and assistance systems
- 82 Personalisation
- 106 Porsche World
- 108 Technical data

For fuel consumption, CO₂ emissions and efficiency class, please refer to page 115.

Choose Thrilling.

We are constantly on tour. Because our life is a live concert. We immediately take to the stage and make the air crackle. Our pulse sets the beat. Then the performance starts. The first chord shakes our world. We experience the sound with every fibre of our body, swept along in a torrent of possibilities. Mainstream has never been our thing. We prefer to remain unconventional and feel alive. We never compromise. We always make our own decisions. More adventure. More life. More thrills. And even more acceleration.

Who accompanies us? A sports car that embodies all this and whose stage is the road.



Macan Turbo.



The Macan concept.

We have proven that we will not be dictated to. We do not follow trends but prefer to write our own adventure stories. Such as that of a compact SUV that inextricably combines sportiness, design and everyday practicality: the Macan.

The design – clearly refined. The taillight strip ensures a confident appearance. Typical Porsche DNA: the LED main headlights with four-point daytime running lights and four-point brake lights. Porsche Communication Management (PCM) with its large 10.9-inch touchscreen display stands for pure Infotainment. The new engine generation captivates with the power and sound typical of a sports car. The dynamic performance of the Macan also makes hearts beat faster. Because there's no time to lose before embarking upon your next adventure.



**Trends come and go.
But individual style remains.**



The
Vintage
Dress

LA
Boutique

OPEN

Design.

Exterior.

Every era has its fashions. Its tendencies and trends. Most of these are transitory. But what endures? Shapes that can be easily recognised. That represent an attitude and therefore outlast everything else. We call this Porsche DNA.

With its dynamic overall look, the Macan is unmistakably a sports car. Its redesigned rear appears extremely powerful. Like a bold line under its own signature, the characteristic taillight strip emphasises the 'PORSCHE' logo. The broad shoulders over the rear wheels are reminiscent of the 911. And a visual demonstration of the road-hugging nature of the Macan.

But there's more: the muscular rear of the Macan GTS enthrals with its sporty, black rear apron with diffuser. And the sports tailpipes in black of the standard sports exhaust system make an audible statement.

The four-point brake lights complement the taillight strip – not only functionally. They also reveal that the Macan bears the Porsche DNA. This is particularly clear in the Macan GTS: here the taillights are additionally tinted.

Its flank is also typically Porsche. From this angle, every muscle appears to be energised – like a predator ready to pounce. Its roof line slopes to the

back like a coupé, thereby creating characteristic sports car contours with a high aerodynamic quality. Our designers call this the Porsche flyline.

Exclusively for the Macan Turbo, the roof spoiler additionally optimises the aerodynamics, thereby proving that only one trend really matters: your own.



Macan GTS.



Macan GTS.

Adventure fills the air. And the Macan models vigorously absorb this – thanks to the enlarged air intakes in their front end. In the GTS, the SportDesign package gives the air intake grilles and distinctive airblades a matt black finish. Overall, the front has a wide, sporty appearance that hugs the tarmac. Not only does this look good, this means that the engine is optimally cooled on its way to the next event. And the road is perfectly illuminated – by the standard LED headlights. These are tinted in the Macan GTS – and therefore a touch more impressive.

The sideblades also attract attention. They emphasise the dynamic lines and are reminiscent of the 918 Spyder. In the Macan and Macan S, they are finished in Lava Black, as standard. In the Macan GTS in matt black with the 'GTS' logo in black (high-gloss). As an option for all Macan models, the sideblades are also available in Carbon, Brilliant Silver, black (high-gloss) or exterior colour.

Another design highlight? The wide bonnet, reminiscent of the legendary Porsche 917, which won countless victories in the early 1970s – at the 24h of Le Mans, for example, where it held the distance record for 39 years.

Still not enough? The Macan Turbo takes to the road with new LED headlights and four-point daytime running lights including Porsche Dynamic Light System (PDLS), sideblades in exterior colour and SportDesign exterior mirrors. As standard, of course. The 20-inch Macan Turbo wheels in Dark Titanium with highly polished surfaces also catch the eye. The sportiness of the Macan GTS is proven by the 20-inch RS Spyder Design wheels in satin black. Even more sporty and exclusive are the optionally available 21-inch 911 Turbo wheels.

But we still haven't had enough, not by a long way. The interior has plenty more room for further highlights.

Interior.

Chase one experience after the other. Of course you want to maintain an overview. The sporty front seats convey the typical Macan feeling: you may be sitting high above the road, but you are still closely connected to it. The seat position is also extremely comfortable for longer journeys. Thanks to the optional comfort seats with comfort memory package (14-way) or adaptive Sports seats with comfort memory package (18-way).

As a sports car manufacturer, we understand that a car and its driver must form a single entity. So you do not simply sit in the Macan – but, thanks to its architecture, you are integrated into the vehicle. The three-dimensional arrangement of the controls lends the interior a cockpit character. The instrument cluster with its three-tube design and centrally positioned rev counter lets you keep an eye on

everything. The distance between the standard multifunctional steering wheel and the PDK (Porsche Doppelkupplung) gear selector, as well as the main vehicle functions, is extremely short – via the ascending centre console, characteristic of sports cars. The ignition is on the left – as is typical of Porsche.

The three-spoke sports steering wheel is inspired by the design of the 918 Spyder – and an established motorsport principle: keep your hands on the wheel. Gear changes are ergonomic, fast and sporty, using the two gearshift paddles.

The Macan has an optionally heated multifunction GT sports steering wheel. Its smaller diameter makes it extremely comfortable, especially during sporty driving.

The Macan understands how to set visual accents, with its exclusive interior design. If you opt for the leather package, the seats and dashboard upper section are covered in smooth-finish leather. And thereby underline the already elegant cockpit. In the Macan GTS, the standard material mix of leather and Race-Tex ensures sportiness, grip and elegance. The standard GTS leather interior package including Race-Tex items is complemented by decorative elements in brushed aluminium in black. If you require further personalisation for your Macan, you can choose from various trims.

If you want to be entertained and know what is happening around you, you will be assisted by one highlight of which we are particularly proud: the 10.9-inch touchscreen display in Porsche Communication Management (PCM). This boasts full-HD resolution and a personalisable start screen. Its intuitive menu provides even faster access to the main functions.



Macan GTS.



Macan Turbo with leather interior in Agate Grey and Pebble Grey and further standard equipment.

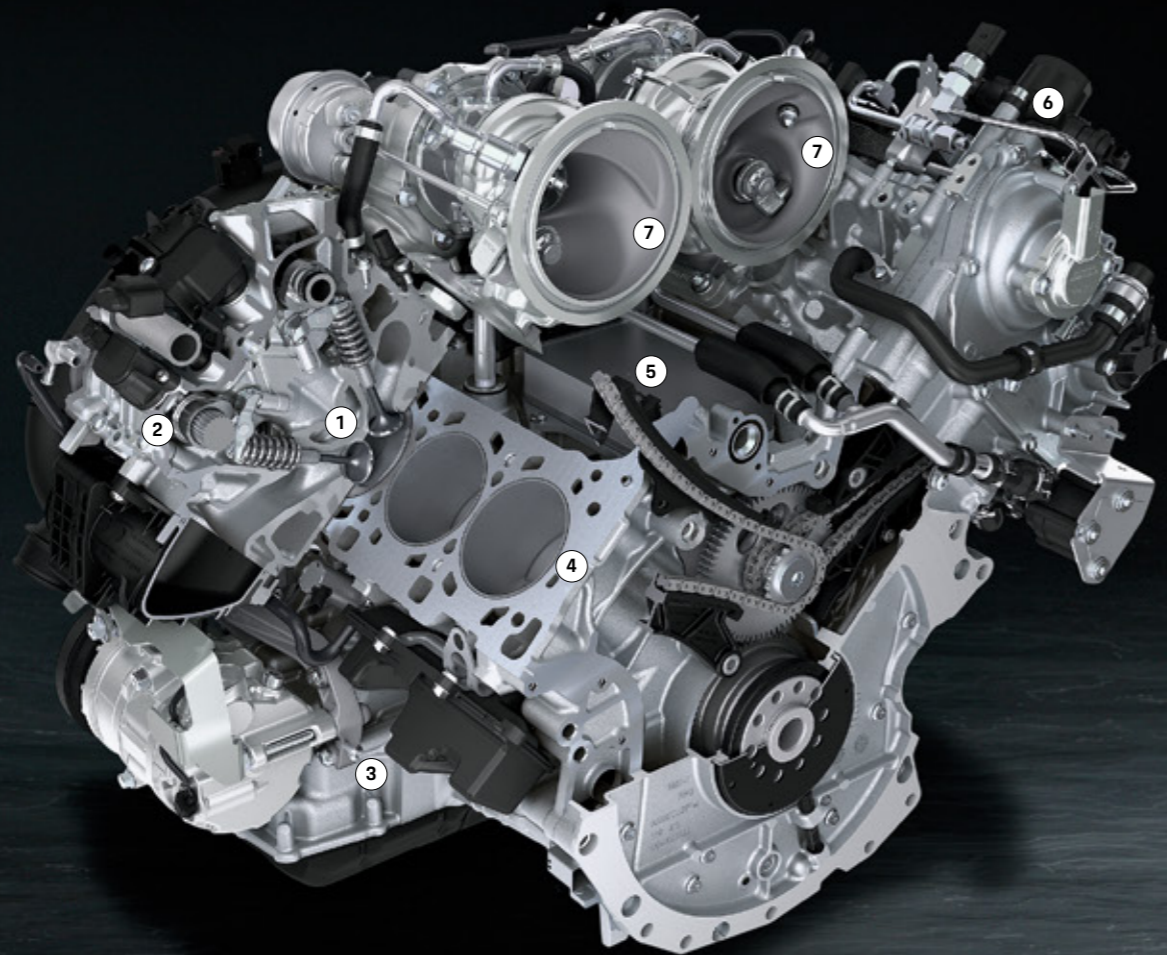


**The most important drive:
repeatedly surpassing yourself.**



Drive and chassis.

- 1 Central injector position of the direct fuel injection (DFI)
- 2 VarioCam Plus
- 3 Variable oil pump
- 4 Weight-optimised aluminium engine block with cast-iron cylinder liners
- 5 Integrated oil/water heat exchanger
- 6 Direct fuel injection (DFI) with up to 250 bar injection pressure
- 7 Twin-turbocharger in central turbo layout



2.9-litre twin-turbo V6 engine in the Macan Turbo.

Engines.

The 2.9-litre twin-turbo V6 engine in the Macan Turbo and Macan GTS.

Producing 324kW (440PS), the 2.9-litre twin-turbo V6 engine in the Macan Turbo proves to be extremely powerful. It accelerates to 100km/h in just 4.5/4.3 seconds¹⁾. Top speed is 270km/h. Maximum torque of 550Nm is achieved at 1,900–5,600rpm. The lightweight design not only delivers improved performance. But also reduces emission values. VarioCam Plus ensures improved efficiency and performance: a system that adjusts the camshafts and valve lift. The Macan GTS transfers 280kW (380PS) to the road. Top speed: 261km/h. Acceleration from 0 to 100km/h takes just a sporty 4.9/4.7 seconds¹⁾. Its maximum torque is 520Nm.

Both models have a sports exhaust system as standard for an even more emotional engine sound.

¹⁾ In conjunction with the optional Sport Chrono Package.

The 3.0-litre turbo V6 engine in the Macan S.

The 3.0-litre turbo V6 engine in the Macan S produces a whopping 260kW (354PS) and is fitted with a twin-scroll turbocharger between the cylinder banks. Here too, we rely on lightweight construction, delivering more PS per litre. The twin-scroll turbocharger ensures that the exhaust gas fumes are fed to the turbine wheel as separate streams – for an optimised charge cycle. The result: high torque at low engine speeds – 480Nm at 1,400–4,800rpm. The engine in the Macan S is also equipped with VarioCam Plus.

The 2.0-litre inline four-cylinder turbo engine in the Macan.

The base model boasts an engine producing 180kW (245PS), high revs and a torque of 370Nm at 1,600–4,500rpm. The optimised two-tract exhaust system generates a throaty sound while on the move. Keyword, sound experience: the sports exhaust system is available on request. For an even more intense, emotional Porsche sound. After all, the road is a stage.

For fuel consumption, CO₂ emissions and efficiency class, please refer to page 115.

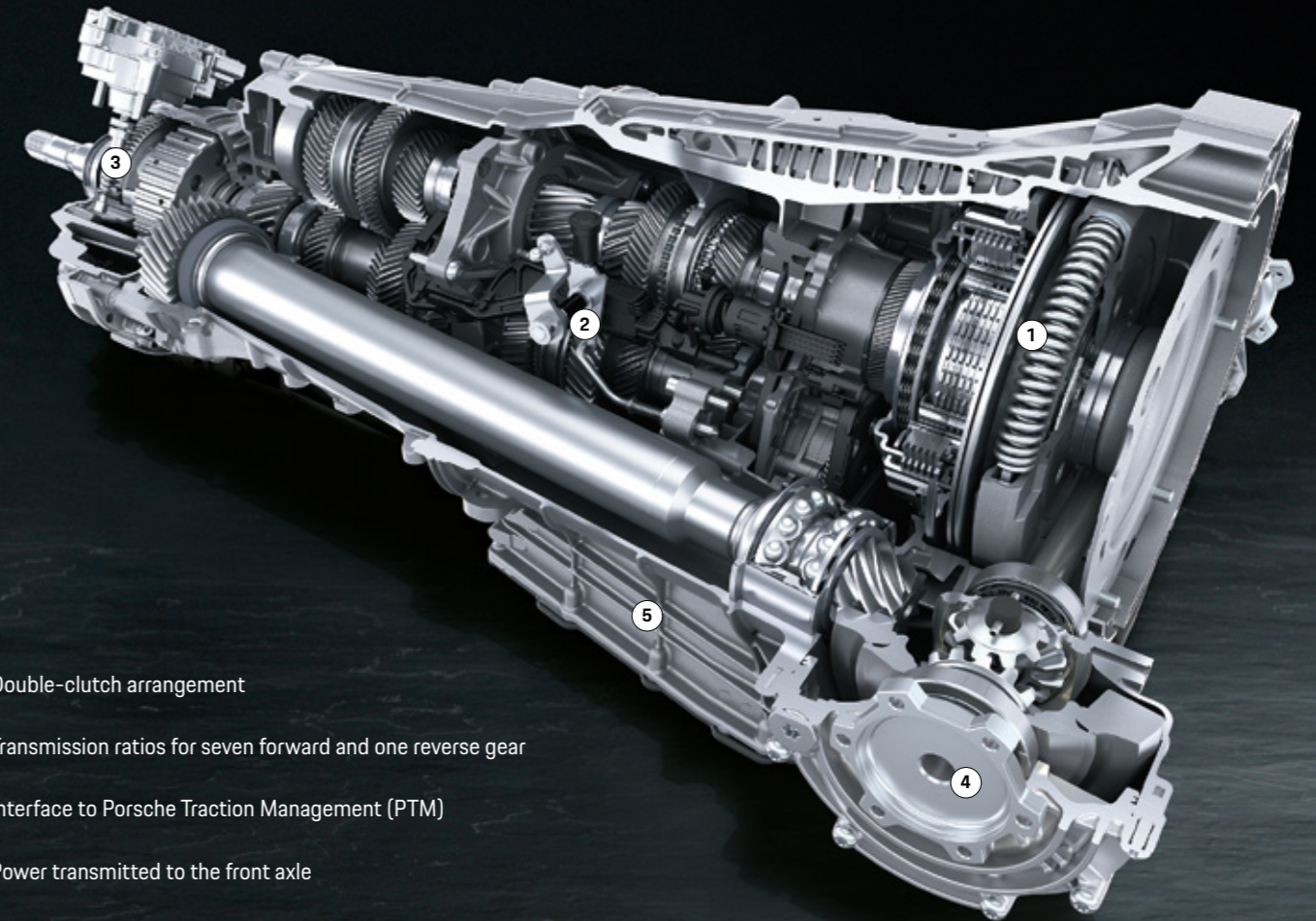


Transmission.

Porsche Doppelkupplung (PDK).

Standard on the Macan models: 7-speed PDK featuring both manual and automatic mode. For extremely fast gear changes with no interruption in the flow of power – as well as excellent driving dynamics and efficiency. The principle of PDK is that whenever a particular gear is engaged, the next gear is already preselected. As a result, gear changes take place within milliseconds. Automatic mode is essentially optimised for fuel economy. This means that PDK is able to offer not only a sporty, agile driving feel, but also increased efficiency. Do you prefer to change gear manually? You can do this either via the two shift paddles on the standard multifunctional sports steering wheel or the PDK gear selector. In conjunction with the optional Sport Chrono Package, the PDK shift times become even shorter in Sport Plus mode and the gear changes even sportier. Launch Control, the racing start function, is also available – for uncompromising driving pleasure.

- 1 Heated multifunction GT sports steering wheel with steering wheel rim in Race-Tex (also available with steering wheel rim in leather) and Sport Chrono Package including mode switch
- 2 Porsche Doppelkupplung (PDK)



- 1 Double-clutch arrangement
- 2 Transmission ratios for seven forward and one reverse gear
- 3 Interface to Porsche Traction Management (PTM)
- 4 Power transmitted to the front axle
- 5 Oil sump

Porsche Traction Management (PTM).

The characteristic sports car driving dynamics of the Macan are thanks in part to the Porsche Traction Management (PTM) active all-wheel drive system. This comprises an electronic and map-controlled multi-plate clutch, automatic brake differential (ABD) and anti-slip regulation (ASR). The electronically controlled multi-plate clutch regulates the distribution of drive force between the rear and front axles. Driving conditions are constantly monitored to enable a precise and lightning-quick response to a variety of situations. Sensors continuously collect a range of data, including the rotational speed of all four wheels, the lateral and longitudinal acceleration of the car and

the current steering angle. If, for example, the rear wheels spin under acceleration, a greater proportion of drive force is deflected to the front by a more powerful engagement of the multi-plate clutch. In addition, ASR reduces wheel slip. In corners, the drive force sent to the front wheels is regulated for optimum lateral stability.

In short: PTM transfers the incredible sportiness of the Macan to the road. Behind the wheel, you have the feeling that you are driving a genuine sports car: traction, driving safety, outstanding steering behaviour, superior handling and, of course, the excellent dynamics typical of Porsche.



For fuel consumption, CO₂ emissions and efficiency class, please refer to page 115.

Macan S with optional equipment.



Chassis.

We do not simply drive in order to travel from A to B. We want to feel that our life is dynamic in every single second. Including on the road. And preferably in a sports car.

Air suspension.

For a high level of comfort and tremendous dynamic performance, you have the option of an air suspension including PASM. With this setup, the car is 10mm lower than with the standard steel spring suspension with PASM. In the Macan GTS, the air suspension including PASM is a further 10mm lower than the Macan S. The effect? An optimum balance between driving comfort and dynamics, as well as a sporty look. The self-levelling function helps to maintain a constant vehicle position. If desired, you can switch the ground clearance to three levels: High Level I, Normal Level and Low Level I. At High Level I, the car is 40mm above Normal Level; at Low Level I, 20mm below it. Loading Level is especially practical: only the rear end lowers 30mm from Normal Level to make it easier to load the car. This function is operated by means of a button in the luggage compartment.

Porsche Active Suspension Management (PASM). PASM is an electronic damping control system that actively and continuously controls the damping force, depending on the road conditions and driving mode, for each individual wheel. For reduced body movements and thus more comfort in all seats. Three modes are available: 'Normal', 'Sport' and 'Sport Plus'.

Sportiness.

Sport Chrono Package including mode switch.

Adventure at the push of a button? A rare occurrence. But not impossible. The Sport Chrono Package provides even sportier tuning of the chassis, engine and transmission. It includes a stopwatch with an analogue and digital display and Sport Chrono functions in PCM to view, store and evaluate lap times as well as other driving stats. One new feature is the mode switch with Sport Response button on the steering wheel, derived from the 918 Spyder. There are four settings to choose from: 'Normal', 'Sport', 'Sport Plus' and 'Individual', which allows you to adjust the vehicle more closely to your personal driving style. When Sport mode is active, the Macan responds even more dynamically and directly. While in Sport Plus mode, the engine becomes even more snappy.

PASM results in harder damping and a more direct steering. The optional air suspension drops to Low Level I. An additional function is Launch Control, which helps to deliver optimum acceleration from a standing start. The stopwatch on the dashboard displays the total driving time, or alternatively the current time.

Porsche Torque Vectoring Plus (PTV Plus).

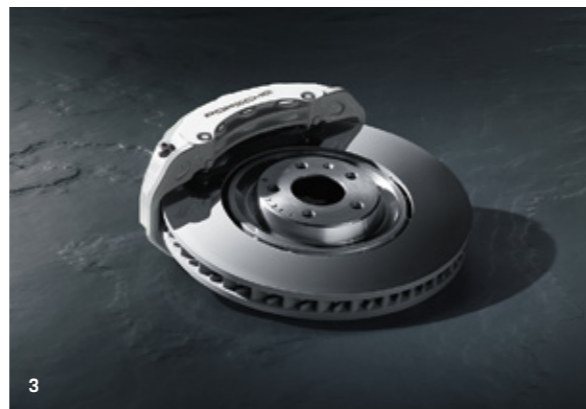
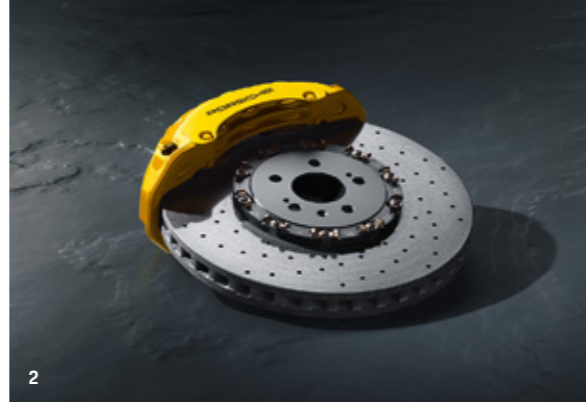
PTV Plus is a system intended to improve driving dynamics and stability. It works with a variable torque distribution on the rear wheels and an electronically regulated rear differential lock. PTV Plus optimises steering response and precision by selectively applying brake pressure to the left or right rear wheel. Consequently, a greater amount of drive force is applied to the outside rear wheel, inducing an additional rotational pulse (yaw movement) – making cornering a real experience.

Off-Road button.

Would you like to try roads that aren't actually there? A button on the centre console sets your Macan to Off-Road mode. All relevant systems switch to a traction-optimised programme for off-road terrain. The optional air suspension including PASM automatically adjusts to High Level I. In addition, optional Porsche Torque Vectoring Plus (PTV Plus) and Porsche Stability Management (PSM) – integrated as standard – optimally adapt their setup for off-road use, delivering improved driveability and safety. PTM, which is also fitted as standard, provides a fully variable distribution of drive force between the front and rear axles. This delivers a crucial increase in traction and driving safety.



Macan GTS.



Brakes.

The brakes of all the Macan models are finely-tuned for optimum performance. So it goes without saying that the brake systems are super-sized and adapted to the high power output. At the front, the Macan models are equipped with four-piston aluminium monobloc fixed brake calipers. From the Macan S upwards, six-piston units are fitted. The brake discs are internally vented for consistently high braking performance, even during continuous use. The brake calipers of the Macan are finished in black. Those on the Macan S in Titanium Grey, and on the Macan GTS in red. On the Macan Turbo, they are white – thanks to the highly efficient Porsche Surface Coated Brake (PSCB).

Porsche Ceramic Composite Brake (PCCB).

As an option, you can have your Macan equipped with the race-track-approved Porsche Ceramic Composite Brake (PCCB). The cross-drilled ceramic brake discs have a diameter of 396mm at the front and 370mm at the rear. In addition to their corrosion resistance, the decisive advantage of the ceramic brake discs is the extremely low weight: they are approximately 50% lighter than cast-iron discs of a similar design and size. As well as enhancing driving performance and fuel consumption, this particularly reduces unsprung and rotating masses. Optional for the Macan Turbo, Macan GTS and Macan S.

Porsche Surface Coated Brake (PSCB).

Braking can also be impressive: the Porsche Surface Coated Brake (PSCB) combines a cast-iron brake disc with a ceramic coating. The brakes not only boast white brake calipers. Other advantages include improved corrosion resistance of the brake discs, even after a longer period of standstill, and considerably less brake dust formation. The result: the wheels and brake system stay clean for longer. Standard on the Macan Turbo, optional for all other Macan models.



- 1 Macan GTS brakes: 360mm diameter, front, 330mm rear, brake calipers in red
- 2 Porsche Ceramic Composite Brake (PCCB), 396mm diameter, front, 370mm rear, brake calipers in yellow
- 3 Macan Turbo brakes: Porsche Surface Coated Brake (PSCB), 390mm diameter, front, 356mm rear, brake calipers in white
- 4 Macan S brakes: cast-iron brake discs, 360mm diameter, front, 330mm rear, brake calipers in Titanium Grey
- 5 Macan brakes: cast-iron brake discs, 345mm diameter, front, 330mm rear, brake calipers in black



The best lifestyle magazine:
your own timeline.



Porsche Connect.

Infotainment.

For even more points of contact with your next adventure: Porsche Communication Management (PCM) is your control centre for audio, navigation and communication. As part of the navigation and infotainment services, online navigation provides Real-time Traffic Information using mobile data as standard, so that you are always in the right place at the right time. The current PCM generation in the Macan has a 10.9-inch touchscreen display with full-HD resolution.

Another highlight is the customisable start screen that is intuitive to operate.

Of course, every experience also deserves its own soundtrack. While driving, you can enjoy your favourite music via two USB data and charge ports in the front as well as Bluetooth® or even an SD card – or simply listen to the radio. Two USB charge ports are also available in the rear. The standard digital radio makes it possible to receive digital radio broadcasts with better sound quality.



Everyday routine – or time for an adventure? With us, no two days are the same. We do not compromise, preferring to break new ground. Porsche Connect helps you do this. It puts you in the ideal starting position for any road trip – and any of your goals. With useful services and smartphone apps that make your life easier in many ways.

In certain countries, an integrated LTE-enabled SIM card and data package are also available. You can use these to conveniently access the navigation and Infotainment services – except for the music streaming functions. For all music services and to use the in-car WiFi hotspot, a data package is available from the Porsche Connect Store in selected countries. Of course, you can still use your own SIM card if you prefer. This will require a subscription to a mobile network provider of your choice (subject to charge).

Services and apps.

The Porsche Connect services can be simply operated via PCM or My Porsche. With the locator service, you can find destinations of any kind in a matter of seconds. How about an open-air or covered parking space? Or a good restaurant for a catch-up with friends – chosen based on the reviews of other diners? Voice Pilot, the intelligent voice control system in your Macan, will help you keep an eye on the road and traffic at all times. Via simple interaction, it will take you to your destination, even if you cannot provide a specific address. For example: tell your Porsche that you are hungry and Voice Pilot will immediately suggest appropriate destinations, such as restaurants or supermarkets in your vicinity.

Porsche Connect offers a variety of services and smartphone apps.

The Porsche Connect app allows you to send destinations to your Porsche before you start your journey. Even your smartphone calendar can be viewed directly on PCM and stored addresses used for navigation. What's more, the Porsche Connect app gives you access to millions of music tracks thanks to its built-in music streaming function.

The Porsche Car Connect app helps you retrieve vehicle data and remotely control selected vehicle functions via your smartphone or Apple Watch. The optional Porsche Vehicle Tracking System (PVTS) with theft detection sends warning messages to the app.

Go to www.porsche.com/connect to learn more about the apps and services available.

- 1 Apps
- 2 Apple CarPlay
- 3 Calendar
- 4 Locator

Porsche Connect services include a free inclusive period of use, the length of which may vary with services package and country but shall not be less than three months. The full range of Porsche Connect services or individual services thereof may not be available in some countries. In addition, an integrated SIM card with data allowance for use of selected Porsche Connect services will be included in the price in some countries. For use of the WiFi hotspot and the other non-included Porsche Connect services, e.g. music streaming, via integrated SIM card in most countries, a chargeable data package is also available from the Porsche Connect Store. Alternatively, you can establish a data connection using a SIM card of your own. For further information on free subscription periods, follow-on costs and availability of individual services in your country, please visit www.porsche.com/connect or consult your Porsche Centre.





Offroad Precision app¹⁾

Of course, experiences can also be enjoyed away from paved roads. When driving through rough terrain, the Offroad Precision app provides valuable tips. Such as a tutorial, giving you an insight into how to skilfully drive the Macan over hill and dale. Your personal progress will be recorded and evaluated. Improve your performance, share your status with friends or simply challenge one another.

But you can document even more than this. Collect data about routes, times or GPS locations. The Offroad Precision app will use these values to automatically produce route and altitude profiles that you can subsequently view on a map. What is even more impressive than any statistic? Reality. And you can capture it all on video. The clips are recorded either with a smartphone or externally controlled Action Cam²⁾.

1) Only in conjunction with optional compass display on the dashboard.
2) Not included.

Apple CarPlay.

The optionally available Apple CarPlay enables you to simply connect your iPhone to your Porsche and have some of your apps shown directly on PCM. With the Siri voice recognition interface, you can conveniently use your apps on the move while keeping your full concentration on the road. Wireless Apple CarPlay without using the USB port is currently not available in all markets.

Smartphone compartment including inductive charging function.

The optional smartphone compartment including inductive charging function allows your smartphone to be much better integrated into the vehicle. A direct connection to the car's external aerial reduces battery consumption, while optimising reception quality. Simply place your device in the smartphone

compartment in the centre console, where it can be conveniently and wirelessly charged – all to the highest technical standard, so that smartphones from various manufacturers can be used, provided these also support the wireless charging function. The smartphone compartment is not available in all markets.

My Porsche.

Every Porsche can be configured to your preferences. Porsche Connect is the same. So you can personalise and operate many of the Porsche Connect functions and services according to your needs via My Porsche. Plan your route and transfer it to your Porsche. View the current fuel level and data from your last trip, or check whether the doors and windows are closed. If required, your family and friends also have access to My Porsche and thus to certain functions of your Porsche.

Porsche Connect Store.

Would you like to extend your contract? Or purchase additional Porsche Connect services? Visit the Porsche Connect Store at www.porsche.com/connect-store and discover more about what Porsche Connect has to offer. Porsche Connect in all its diversity: learn all about other services, apps and functions online – including availability information for your vehicle and your country. By the way, our portfolio of services is constantly being expanded: visit www.porsche.com/connect for all the latest information.

**Outwardly always at full throttle.
Inwardly the epitome of calm.**





Comfort and entertainment.

Comfort.

We perceive experiences with all our senses. Of course, this also includes the feeling we have when driving our sports car.

Touch: the ascending centre console and optional GT sports steering wheel contribute to the genuine sports car feeling. While the elegant interior conveys the exclusive impression you would expect of a Porsche, thanks to the optional high-quality leather interior. The optional seat ventilation provides a pleasant climate and improved seating comfort. This works by actively ventilating the perforated seat centre and backrest.

Sight: the 10.9-inch touchscreen display lets you maintain an overview of everything at all times. And also look ahead: thanks to the standard navigation system with Real-time Traffic Information (RTTI). The windscreen is heatable, on request. The glass panels of the optional panoramic roof system create an extremely bright and pleasant lighting effect inside your Macan.

In addition, the front portion slides open or tilts to a raised position. A roll-up blind also shields you from strong sunlight.

Hearing: the sports exhaust system generates the powerful sound typical of Porsche – standard on the Macan Turbo and Macan GTS, optional on all other Macan models. For even more audio pleasure, the Burmester® High-End Surround Sound System is available as an option for the Macan models.

Smell: three-zone automatic climate control is fitted as standard. An active carbon filter traps particles, pollen and odours. A new ionisation function is available as an option – for improved air quality. Before it reaches the cabin, the air in the automatic climate control system is passed through an ioniser. Germs and other pollutants are reduced.





1



2

Seats.

Adaptive Sports seats with comfort memory package (18-way).

The adaptive Sports seats with comfort memory package combine ultimate seating comfort with sportiness. Offering 18-way electric adjustment, the seats can be optimally adapted to meet your needs in terms of seat height, squab and backrest angle, seat squab length, fore/aft adjustment and four-way lumbar support. The steering column is also electrically adjustable. The following functions can be memorised: driver and front passenger seat positions, including lumbar support, as well as steering wheel and exterior mirror positions (comfort memory package). The raised side bolsters on the seat cushions and backrest are electrically adjustable – for dynamic driving. Standard on the Macan Turbo. Optional for all other Macan models.

Comfort seats with comfort memory package (14-way).

Would you like generous seating comfort for both front seats? To supplement the standard comfort

seats, the comfort memory package offers additional adjustment capabilities. Thus, driver and front passenger lumbar support, seat squab length and steering column can also be adjusted. Optional for all Macan models.

GTS Sports seats (eight-way).

Exclusively available in the Macan GTS, the eight-way Sports seats offer a seat feeling typical of a sports car. Eye-catcher: the 'GTS' logos embroidered on the headrests.

Comfort seats.

Comfort seats with electric eight-way adjustment on the driver's side are both ideal for relaxed motoring and practical to operate. Seat height, fore/aft position, squab angle and backrest adjustment are all adjustable. The passenger seat is adjusted manually. Seat centres in Race-Tex create a sporty accent. Standard on the Macan S and Macan.

1 Adaptive Sports seats in front (18-way, electric) with comfort memory package including optional Porsche Crest on headrests

2 Comfort seats (front) with eight-way electrical adjustment on the driver's side including optional leather package or optional leather interior

Sound systems.

Burmester® High-End Surround Sound System.

The Burmester® High-End Surround Sound System, optimally adapted to the Macan, transforms sounds waves into unique sensory stimuli – and music into an exclusive soundscape.

The surround sound system developed by Burmester® – one of the world's most respected manufacturers of high-end audio equipment – is available as an option. The technologies behind the system are from the finest premium home audio systems that Burmester® has to offer. The extravagance is uncompromising, the craftsmanship exquisite, the sound phenomenal. The system owes its excellence to countless details, and one goal: audio perfection.

The figures alone sound impressive: 16 amplifier channels with a total output of more than 1,000 watts, 16 loudspeakers including an active subwoofer with 300-watt class D amplifier, a total diaphragm surface area of more than 2,400cm² and a frequency response of 30Hz to 20kHz. Crossover technology has been carried over almost unmodified from Burmester® high-end home audio products. Analogue and digital filters have been optimally defined for their installation location and finely tuned after extensive in-car audio testing. Air-motion transformers (AMT) ensure unmistakably fine, clear and undistorted high-frequency sound reproduction with excellent level stability. The sound enhancer also optimises the tone of data-compressed music files. Optional for all Macan models.

BOSE® Surround Sound System.

This system has been optimally adapted to the Macan models. A total of 14 loudspeakers, including a subwoofer and centre speaker, and 14 amplifier channels with a total output of 665 watts deliver an impressive sound experience. BOSE® SoundTrue enhancement technology delivers even better audio quality and dynamics for compressed file formats such as MP3. It revitalises digitally compressed music. The result: a clearer and more spatially tangible sound. Standard on the Macan Turbo. Optional for all other Macan models.

Sound Package Plus.

The Sound Package Plus ensures an excellent sound: 10 speakers with 150-watt output. The acoustic pattern in the vehicle interior is optimally adapted to the driver and passengers by the amplifiers integrated into PCM. Standard on the Macan GTS, Macan S and Macan.

1 Burmester® High-End Surround Sound System

2 BOSE® Surround Sound System





Everyday use.

Roof rails.

These high-quality roof rails are available in aluminium or with a black (high-gloss) finish. They blend harmoniously into the vehicle's dynamic design. Roof rails are a prerequisite for the optional roof transport system and are only available as a factory-fitted option. Optional for all Macan models.

Roof transport system.

In conjunction with the optional roof rails, this set of lockable cross bars is compatible with all Porsche modules. The load-bearing parts in aluminium are designed to carry a maximum load of 75kg. A range of aftermarket modules is available from the Porsche Tequipment accessories programme. Optional for all Macan models.

Luggage compartment.

The large luggage compartment of the Macan models is prepared for a wide variety of uses and boasts a capacity of 488 litres. A storage compartment to the side offers additional space. The rear bench seat folds down with a ratio of 40:20:40. With the seats fully folded, the available capacity increases to 1,503 litres. The removable luggage compartment cover provides protection against sunlight and offers additional privacy. The ski bag from Porsche Tequipment can also be removed. It can be used outside of the vehicle for carrying equipment or cleaning.

For loading convenience, the optional air suspension enables you to lower the rear end of the vehicle by 30mm using a button in the luggage compartment. The tailgate features a heated glass panel. It opens automatically within five seconds at the push of a button. Its adjustable opening height can be memorised so that it always stops at a safe distance from your garage ceiling, for example.



Towbar system.

When not required, the towball of this electrically extending towbar system disappears under the rear at the push of a button. A 13-pole electrical socket is also included. The towbar is approved for a towing capacity of up to 2,400kg (braked) from the Macan S upwards (Macan 2,000kg) and a towing capacity of 750kg for all Macan models (unbraked). A noseweight of up to 96kg is supported from the Macan S (Macan 80kg). As standard, the vehicle comes ready-equipped with all the necessary preparations. The towbar system is optionally available for all Macan models.



**In life as on the road:
charisma is everything.**

永興
SHENG YONG XING
ROAST DUCK RESTAURANT



Lighting and
assistance systems.



1



3



5



2



4



6

Headlights.

The Macan and Macan S are fitted with LED main headlights as standard. With their high-quality, delicately shaped LED main headlights including PDLS, the Macan Turbo and Macan GTS offer a perfect combination of design and functionality. Unmistakably Porsche: the four-point daytime running lights in the LED main headlights and the four-point brake lights, also integrated into the LED technology of the taillight strip. The front headlights and taillights are tinted in the Macan GTS for an unmistakable look.

Porsche Dynamic Light System (PDLS).

PDLS adapts the light distribution to your speed. The dynamic cornering lights turn the main headlights into the curve, depending on the steering angle and driving speed, while the static cornering lights activate auxiliary headlights to illuminate narrow

curves or turns. Standard on the Macan Turbo and Macan GTS.

Porsche Dynamic Light System Plus (PDLS Plus).

The optionally available LED main headlights including PDLS Plus boast an unmistakable look with their stylistic four-point LED spot lights. The brightness of these headlights ensures optimum illumination of the road head. As well as the standard dynamic and static cornering lights and speed-sensitive headlight range control, adverse weather function is another essential feature. The Porsche Dynamic Light System Plus (PDLS Plus) also includes: the dynamic main beam control and Intersection Assistant function based on navigation data, for enhanced illumination of your surroundings. So you see what's going on around you all the sooner.

1 Macan with LED main headlights

2 Macan Turbo with LED main headlights including Porsche Dynamic Light System Plus (PDLS Plus)

3 Macan Turbo: daytime running lights with LED main headlights including Porsche Dynamic Light System Plus (PDLS Plus)

4 Macan Turbo: dipped beam with LED main headlights including Porsche Dynamic Light System Plus (PDLS Plus)

5 Macan Turbo: dipped beam and cornering lights with LED main headlights including Porsche Dynamic Light System Plus (PDLS Plus)

6 Macan Turbo: main beam with LED main headlights including Porsche Dynamic Light System Plus (PDLS Plus)

Assistance systems.

The better the tuning of everything, the more dynamic, comfortable, efficient and safer you get ahead. Porsche assistance systems are aimed at active, sporty driving, allowing you to enjoy the experience you expect of a Porsche.

Lane Departure Warning.

A camera in the rear-view mirror housing monitors the road in front of the vehicle. If you approach a line and threaten to leave your lane without having indicated, the system issues a warning tone. Lane Departure Warning is standard on the Macan, as is cruise control.

Adaptive cruise control (ACC).

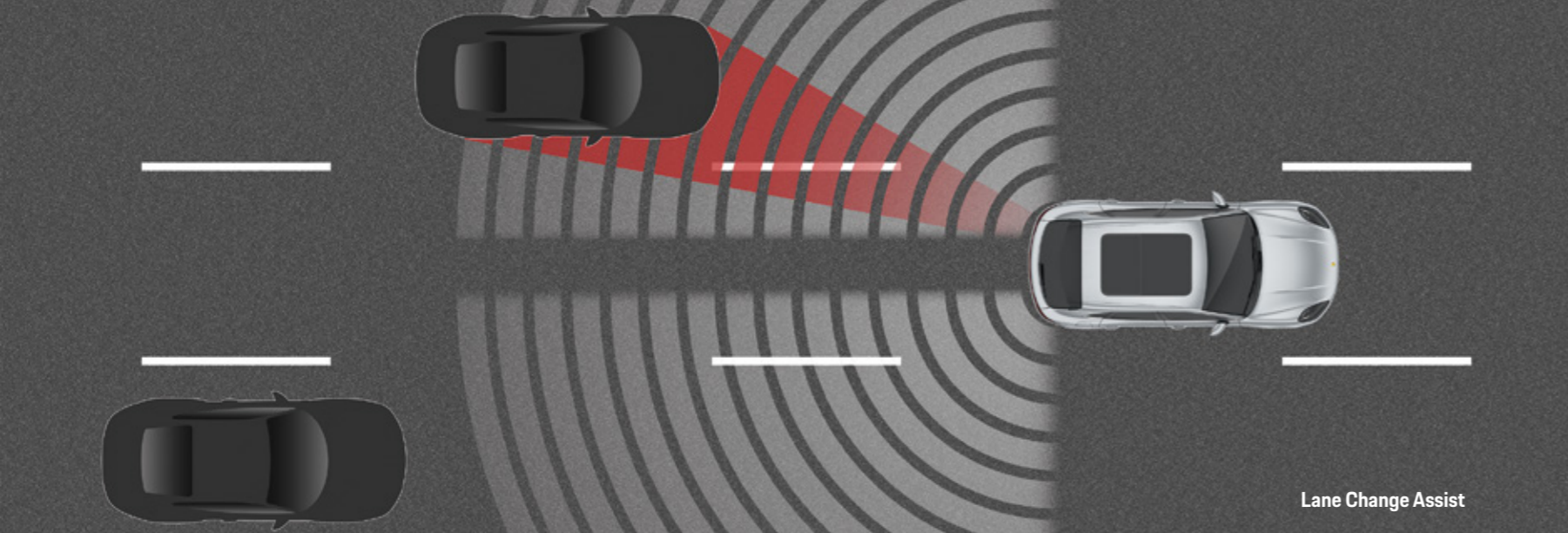
This system regulates the speed of your Macan fully independently in line with the distance to the vehicle in front. A radar sensor in the front apron monitors the area in front of your vehicle. If you approach another vehicle that is travelling slower than your selected cruising speed, the system slows the engine or gently applies the brakes. This continues until the distance that you have pre-set is attained. Your Macan will now maintain its distance to the vehicle in front. If this continues to slow down, adaptive cruise control will keep on reducing your speed, right down to a halt if necessary. When the road ahead is free again, your Macan will accelerate back up to the cruising speed originally set. An impending collision with

vehicles is recognised, in accordance with system limitations. In this case, the system alerts the driver by an audible and visual warning as well as a jolt of the brakes. It can also intervene in the braking process, if required, to reduce the collision speed or possibly avoid the collision. Optional for all Macan models.

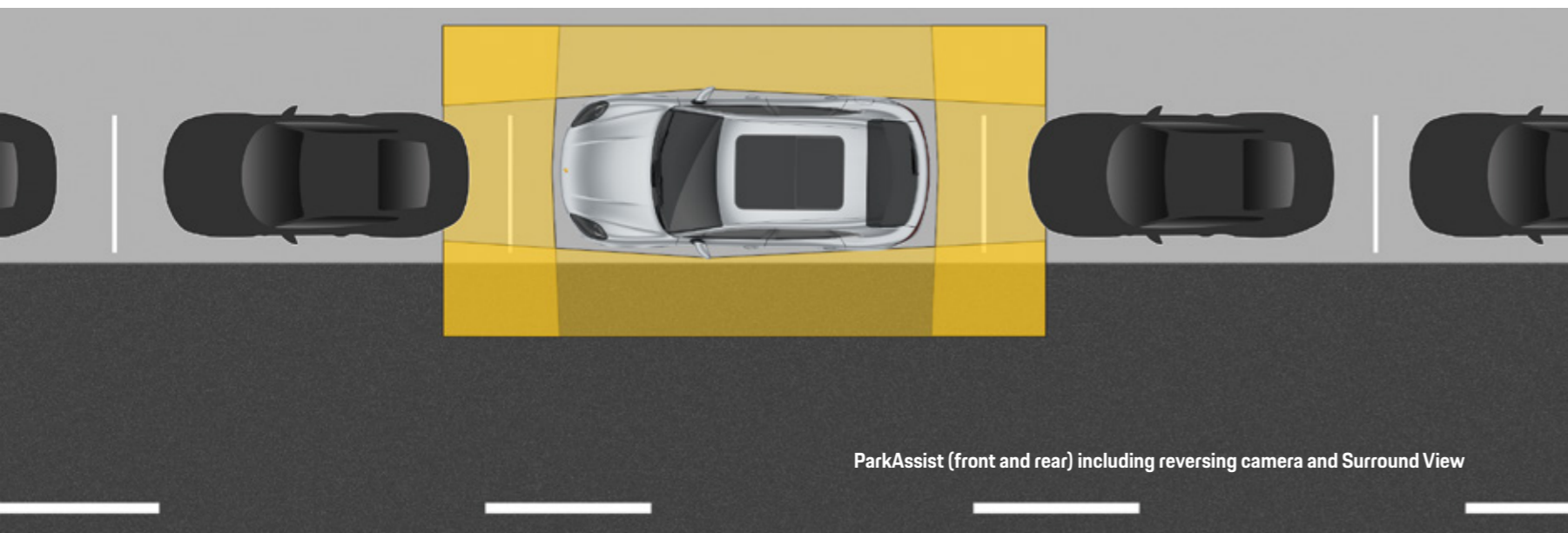
Speed limit indicator.

The speed limit indicator informs you of speed restrictions detected by the integral camera. The information is shown on the instrument cluster screen and PCM touchscreen display. If a road sign is missed – for example due to heavy rain or darkness – the speed limit stored in the navigation module is automatically displayed. The benefit of this function is that it allows you to concentrate better on the road ahead. Optional for all Macan models.





Lane Change Assist



ParkAssist (front and rear) including reversing camera and Surround View

Lane Change Assist.

Lane Change Assist monitors the areas behind the vehicle and its blind spots, in accordance with system limitations. Between 30 and 250km/h, the system issues a visual warning signal in the exterior mirrors whenever a vehicle quickly approaches your vehicle from behind or enters one of your blind spots. In this way, it improves comfort and safety, particularly on motorways. However, the system does not actively intervene to control the vehicle and can be disabled at any time. When towing a trailer, this function is not available. Optional for all Macan models.

ParkAssist front and rear.

ParkAssist warns you of obstacles detected to the front and rear of the vehicle. Its ultrasonic sensors are harmoniously integrated in the front and rear end. The audible alert is supplemented by a visual warning in the central 10.9-inch touchscreen display, showing a schematic representation of the vehicle from a bird's eye perspective. Along with a graphic, depicting your proximity to these obstacles. Optional for all Macan models.

Reversing camera.

The reversing camera facilitates precise reverse parking and manoeuvring and also assists when hitching a trailer. The camera image and dynamic guidelines on the PCM touchscreen display help to illustrate the predicted course of the vehicle given the current position of the steering wheel. Optional for all Macan models.

Surround View.

With Surround View, four cameras located in the front apron, exterior mirrors and rear generate an all-round image of the car and its immediate surroundings. In PCM, the driver can choose between a bird's eye view, side view and corner view – noticeable relief on the 10.9-inch touchscreen display of PCM when parking and manoeuvring. Optional for all Macan models.



Better than any template:
your own unique approach.



Personalisation.



**Your inspiration.
Our passion.**

Porsche Exclusive Manufaktur.

Our wealth of experience goes back a long way. Since the very beginning, we at Porsche have been dedicated to realising customer wishes as part of our special request service. Known until 1986 as the Porsche Sonderwunschprogramm, and then Porsche Exclusive, today we call it Porsche Exclusive Manufaktur.

We love what we do. We love our work. Every seam, every square inch of leather, and every single other fine detail receives the same devotion. We transfer our experience and passion together with your inspiration to the car – and that's how we bring dreams to life. Directly from the factory.

None of this would be possible without originality, enthusiasm and attention to detail, and it all starts with your personal consultation. That's because we always keep one goal in mind: to fulfil your particular wishes and requirements, turning 'a' Porsche into 'your' Porsche.

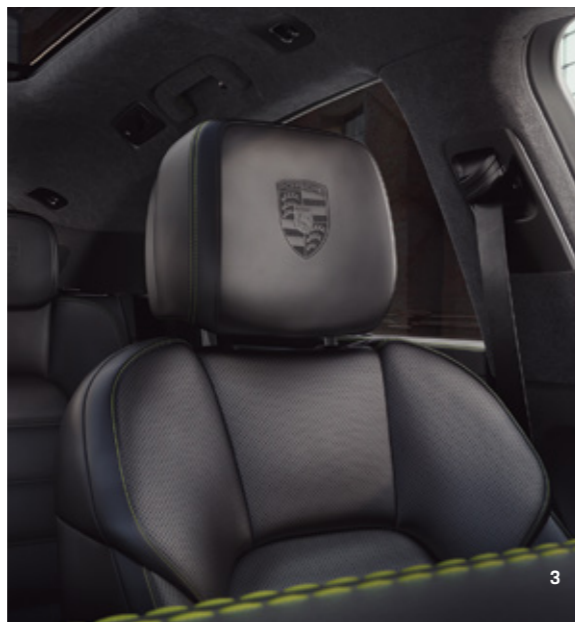
And how do we turn your dreams into reality? With composure and meticulous care, by means of precision handcrafting and the use of exquisite materials such as leather, fine wood or aluminium. Added value is achieved through dedication and finesse. Or to put it another way: the intersecting of sporty performance, comfort, design and your personal taste. A Porsche with your signature touch.

We offer a wide range of personalisation options, with visual and technical enhancements for the interior and exterior. From a single alteration to extensive modifications. Your inspiration is our passion.

Be inspired by our examples on the following pages and visit www.porsche.com/exclusive-manufaktur to learn everything you need to know about configuring these extraordinary vehicles.

A configuration example from the Porsche Exclusive Manufaktur.

- 1 LED main headlights in black including Porsche Dynamic Light System Plus (PDLS Plus)
- 2 21-inch Sport Classic wheels painted in black (high-gloss), sideblades painted in black (high-gloss), door handles painted in black (high-gloss)
- 3 Porsche Crest on headrests (front and outer rear seats), interior trim package with decorative stitching in contrasting colour (Mamba Green)
- 4 Interior package painted in Mamba Green Metallic, interior trim package with decorative stitching in contrasting colour (Mamba Green), personalised floor mats with leather edging
- 5 SportDesign package painted in black (high-gloss), door handles painted in black (high-gloss), LED main headlights in black including Porsche Dynamic Light System Plus (PDLS Plus)



The Macan Turbo in Mamba Green Metallic.



The Macan S in Volcano Grey Metallic.

1



2



3



4



5

A configuration example from the Porsche Exclusive Manufaktur.

- 1 20-inch Macan Turbo wheels painted in Volcano Grey Metallic, SportDesign package, sports tailpipes in black, SportDesign exterior mirrors
- 2 SportDesign exterior mirrors
- 3 20-inch Macan Turbo wheels painted in Volcano Grey Metallic
- 4 Heated multifunction sports steering wheel in Anthracite Chestnut, instrument dials in Mojave Beige, Sport Chrono stopwatch dial in Mojave Beige
- 5 Seat centres in leather in contrasting colour (black), Anthracite Chestnut interior package, seat belts in Mojave Beige, Porsche Crest on headrests (front and outside rear seats)

Exterior colours.

Solid exterior colours.



White



Black

Special colours.



Crayon



Carmine Red



Miami Blue

Metallic exterior colours.



Volcano Grey Metallic



Carrara White Metallic



Mahogany Metallic



Dolomite Silver Metallic



Sapphire Blue Metallic



Night Blue Metallic



Jet Black Metallic



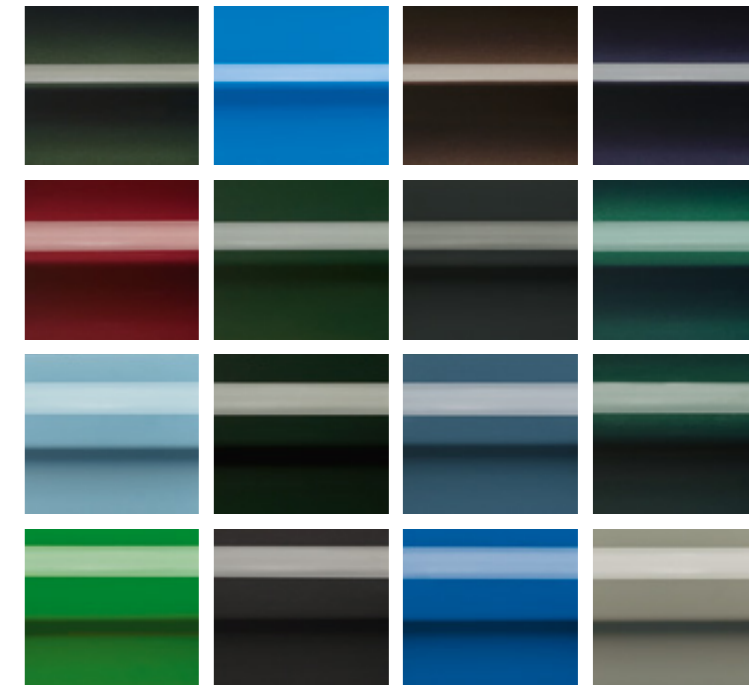
Mamba Green Metallic

Colour of your choice.

Highlight the individuality of your Porsche with a colour developed specially for you, based on your sample.

Exterior colours to sample.

Choose from an extended range of solid and metallic colours with a number of historic Porsche, classic and modern colours.



Interior colours.

Standard interior colours Standard interior.



Black
(roof lining and carpet: black)



Agate Grey
(roof lining²⁾ and carpet: Agate Grey)



Two-tone: black and Mojave Beige
(roof lining and carpet³⁾: black)

Standard interior colours Leather package¹⁾.



Black
(roof lining and carpet: black)



Agate Grey
(roof lining²⁾ and carpet: Agate Grey)



Two-tone: black and Mojave Beige
(roof lining and carpet³⁾: black)



Two-tone: black and Garnet Red
(roof lining and carpet³⁾: black)

Standard interior colours Leather interior.



Black
(roof lining and carpet: black)



Agate Grey
(roof lining²⁾ and carpet: Agate Grey)



Two-tone: black and Mojave Beige
(roof lining and carpet³⁾: black)



Two-tone: black and Garnet Red
(roof lining and carpet³⁾: black)



Two-tone: Agate Grey and Pebble Grey
(roof lining and carpet³⁾: Agate Grey)

Special interior colours Natural leather.



Espresso
(roof lining²⁾ and carpet: Espresso)

GTS leather package.¹⁾



Black
including Race-TEX items²⁾

GTS leather interior.



Black
including Race-TEX items²⁾



Black with GTS interior package in Carmine Red
with Race-TEX items²⁾



Black with GTS interior package in Crayon
with Race-TEX items²⁾



Black with GTS interior package in Carmine Red
with no Race-TEX items



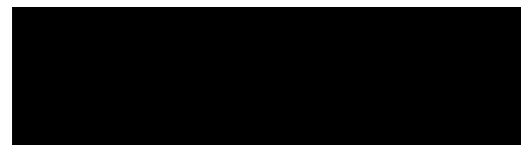
Black with GTS interior package in Crayon
with no Race-TEX items

1) The leather package (partial leather interior) incorporates leather on the dashboard, lid of the centre console storage compartment, seat centres, inner seat bolsters, headrests, armrests, door panels and door pulls. In conjunction with a two-tone colour combination, leather items are in a contrasting colour.
2) If the optional panoramic roof system is chosen, the sunblind in contrasting colour is finished in black.
3) Carpet in luggage compartment in darker colour.

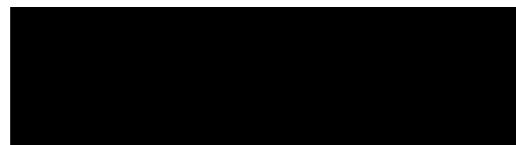
1) The leather package (partial leather interior) incorporates leather on the dashboard, lid of the centre console storage compartment, seat centres, inner seat bolsters, headrests, armrests, door panels and door pulls. In conjunction with a two-tone colour combination, leather items are in a contrasting colour.
2) Race-TEX items on seat centres front and rear, door armrests front and rear and centre console armrest.



Interior packages.



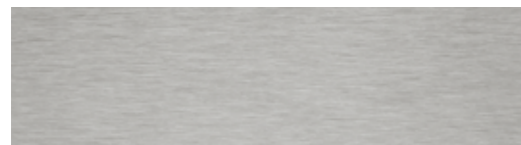
Black (standard)



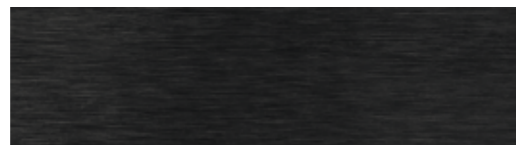
Black (high-gloss)



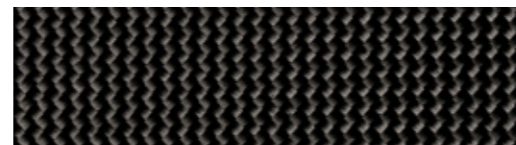
Interior package painted *Porsche Exclusive Manufaktur*



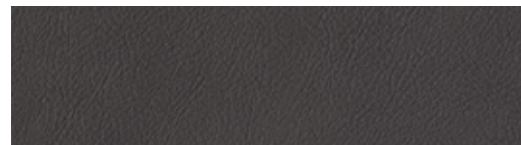
Brushed aluminium



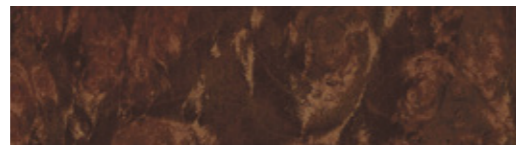
Brushed aluminium in black



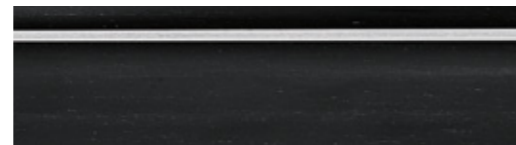
Carbon



Leather interior package *Porsche Exclusive Manufaktur*



Dark walnut¹⁾



Anthracite Chestnut with aluminium inlay^{1), 2)} *Porsche Exclusive Manufaktur*

1) Since wood is a natural product, there may be variations in colour and grain.
2) Decorative steering wheel also available from Porsche Exclusive Manufaktur.



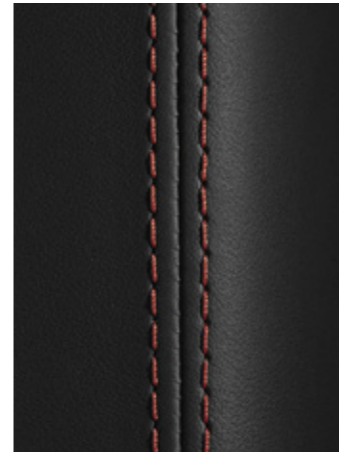
Enhanced interior personalisation.

How about even more design freedom in the vehicle interior? The interior packages with decorative stitching and seat centres in leather in contrasting colour from Porsche Exclusive Manufaktur make it possible to configure your Macan to meet your individual needs, while lending additional accents to the interior. The packages are available in all standard colours. Whether used individually or in combination – the result is always a harmonious overall image that makes your Macan one thing above all else: one-of-a-kind.

Be inspired by our colour combinations. Or visit www.porsche.com to access the Porsche Car Configurator.



— Interior trim package with decorative stitching in contrasting colour
 — Seat centres in leather in contrasting colour



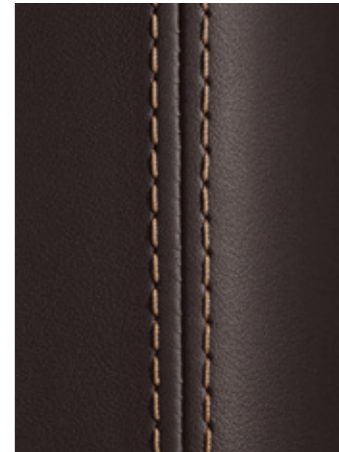
Leather: black
 Decorative stitching: Garnet Red



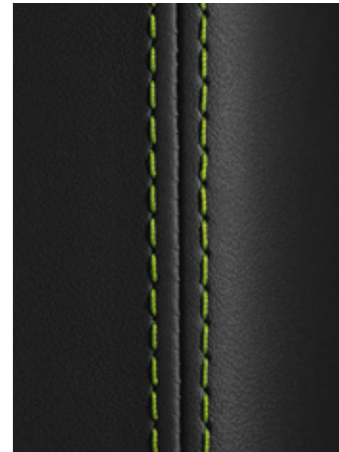
Leather: Agate Grey
 Decorative stitching: Pebble Grey



Leather: Mojave Beige
 Decorative stitching: black



Leather: Espresso
 Decorative stitching: Mojave Beige



Leather: black
 Decorative stitching: Acid Green



Leather: black
 Seat centres in leather: Garnet Red
 Decorative stitching: Garnet Red



Leather: Mojave Beige
 Seat centres in leather: black
 Decorative stitching: black



Leather: Agate Grey
 Seat centres in leather: Pebble Grey
 Decorative stitching: Pebble Grey



Leather: Espresso
 Seat centres in leather: Mojave Beige
 Decorative stitching: Mojave Beige



Leather: black
 Seat centres in leather: Pebble Grey
 Decorative stitching: Garnet Red

Wheels.



1

- 1 20-inch RS Spyder Design wheel in satin black
 - 2 18-inch Macan wheel
 - 3 18-inch Macan S wheel
 - 4 19-inch Macan Sport wheel
 - 5 19-inch Macan Design wheel
 - 6 20-inch Macan Turbo wheel in Dark Titanium with highly polished surfaces (exclusive to the Macan Turbo)
 - 7 20-inch Macan Turbo wheel in satin platinum
 - 8 21-inch RS Spyder Design wheel
 - 9 21-inch 911 Turbo Design wheel
 - 10 21-inch Sport Classic wheel
- Porsche Exclusive Manufaktur*



2



3



4



5



6



7



8



9



10

Porsche Exclusive Manufaktur.



Tinted LED taillights and light strip

Porsche Exclusive Manufaktur



21-inch Sport Classic wheel painted in exterior colour

Porsche Exclusive Manufaktur



SportDesign exterior mirrors painted in exterior colour

Porsche Exclusive Manufaktur



Interior package painted in exterior colour

Porsche Exclusive Manufaktur



Sports tailpipes in black

Porsche Exclusive Manufaktur



20-inch Macan Turbo wheel painted in black (high-gloss)

Porsche Exclusive Manufaktur



Model logo on centre console armrest

Porsche Exclusive Manufaktur



Porsche Crest on headrests (front seats)

Porsche Exclusive Manufaktur

Personalisation options.



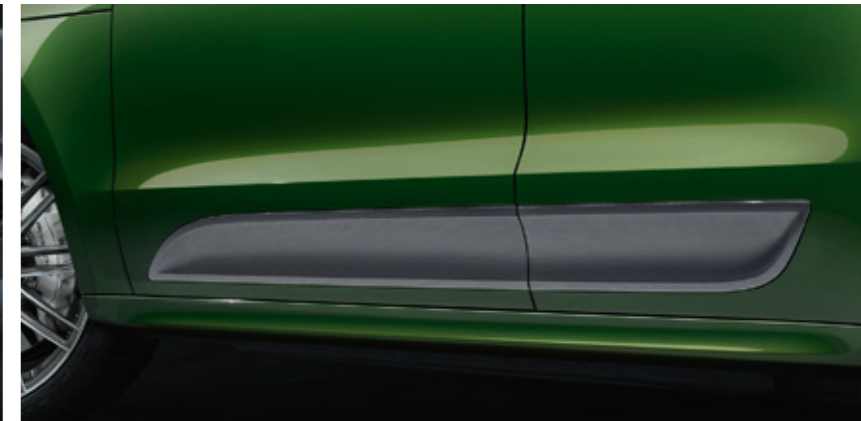
LED main headlights including PDLS Plus



Panoramic roof system



Sport Chrono Package with mode switch



Sideblades in Brilliant Silver¹⁾



Porsche Ceramic Composite Brake (PCCB)



21-inch 911 Turbo Design wheel



Adaptive Sports seats, front (18-way, electric)



Burmester® High-End Surround Sound System

¹⁾ Note for the Macan GTS: the 'GTS' logo in glossy black is omitted when sideblades are painted in Brilliant Silver.

Porsche Tequipment.

With Porsche Tequipment products developed specifically for your Macan, you can style it entirely to your own preference. Right from the start, the same rules that apply to our vehicles also apply to the Porsche Tequipment products: developed, tested and proven at the Development Centre in Weissach. By the same Porsche engineers and designers who made your car. Designed with the complete vehicle in mind and precisely tailored to your Porsche.

And your original car warranty? It will remain completely intact, whichever Tequipment products you ask your Porsche Centre to fit.

To discover more about Porsche Tequipment, please consult your Porsche Centre. Or visit www.porsche.com/tequipment to view the information online. Scan the QR code to go straight to our Tequipment accessories finder, where you can view all the products in detail.



1 Roof boxes

High-quality plastic boxes, available in black (high-gloss) with a capacity of approximately 320 or 520 litres.

2 Care sets

Interior and exterior care products optimally suited to your Porsche.

3 Summer and winter wheel and tyre sets

For enhanced individuality, agility and safety. And for even greater driving pleasure.



Porsche Car Configurator.

The Macan dream comes in many shapes and colours. The Porsche Car Configurator allows you to quickly and intuitively discover which dream suits you the best.

In the search for your genuine dream car, you can now not only create your personal configuration on your computer and tablet, but also on your smartphone. Using freely selectable perspectives and 3D animations on your desktop. Individual recommendations help you to make the right decision.

Visit www.porsche.com to access the Porsche Car Configurator and learn more about Fascination Porsche.



Porsche World.



Porsche Centres

Your Porsche Centre can assist you with every aspect of purchasing and owning your Porsche. You will also find a wide range of products and services, including genuine Porsche parts and top-quality accessories.



Porsche Exclusive Manufaktur

At Porsche Exclusive Manufaktur, we make our customers' personal wishes a reality. With custom work. By hand. With care and dedication. To turn something special into something unique. www.porsche.com/exclusive-manufaktur



Porsche Factory Collection

Get started with your Porsche directly from the Manufaktur: in Zuffenhausen with the vehicle handover against a historical backdrop in the historic Werk 1 or in Leipzig with intensive driving induction on the race track.



Porsche Tequipment

Personalise your Porsche at any time after purchase with our range of accessories. You will also find all our available products online at www.porsche.com/tequipment using the Tequipment Accessories Finder.



Porsche Driver's Selection

With leisurewear, model cars, timepieces, leather goods, luggage specifically tailored to Porsche luggage compartments and other intelligent accessories, there are plenty of opportunities to indulge your passion for Porsche off the road, too.



Porsche Travel Experience

Embark on a thrilling adventure and feel the power of Porsche. Stay in top-class hotels and dine in five-star restaurants – in the most beautiful places on Earth. To find out more, call +49 711 911-23360. E-mail: travel@porscheexperience.de



Porsche Track Experience

Develop your skill and explore your Porsche with the Porsche Sport Driving School. Learn about events at some of the world's most famous racing venues, call +49 711 911-23364. E-mail: track@porscheexperience.de

Porsche Service

Your expert partner for all current Porsche models as well as old and modern classics, whether your car needs servicing, routine care or special repairs.

Porsche Assistance

Enjoy peace of mind with our exclusive breakdown and accident recovery service. Membership is free when you buy a new Porsche.

Porsche Approved

So that our vehicles remain reliable and retain their value whether new or previously owned, all Porsche Approved cars meet the most stringent Porsche quality standards across the world. Each car is backed by the Porsche Approved warranty.

Porsche Financial Services

Our leasing and finance offers make it easy for you to fulfil your dream of owning a Porsche. To support you every step of the way, we also offer insurance products, the Porsche Card and many other services.

Porsche Clubs

Since the first Porsche Club was founded in 1952, their number has grown to 675 with over 200,000 members worldwide. To find out more, go to www.porsche.com/clubs or call +49 711 911-77578. E-mail: communitymanagement@porsche.de

Christophorus

Published five times a year, our magazine for Porsche owners offers news, interviews and a variety of features from the world of Porsche. Visit www.porsche.com/christophorus-magazine where all articles are available to you free of charge.

Porsche Classic

Your specialist source for genuine Porsche parts as well as restoration services for all Porsche classics. Visit www.porsche.com/classic to find out more.

Porsche Museum

More than 80 vehicles at our headquarters in Stuttgart-Zuffenhausen await to take you on a journey through Porsche history. See icons such as the 356, 911 and 917 presented in an atmosphere you can't experience anywhere else.





Technical data.

Engine	Macan	Macan S
Type	R4 turbo engine	V6 turbo engine
Number of cylinders	4	6
Valves/cylinders	4	4
Effective displacement	1,984cm ³	2,995cm ³
Max. power (DIN) of combustion engine at rpm	180kW (245PS) 5,000–6,750	260kW (354PS) 5,400–6,400
Max. torque of combustion engine at rpm	370Nm 1,600–4,500	480Nm 1,400–4,800
Fuel grade	Super Plus (RON 98)	Super (RON 95)
Transmission		
Drive	Porsche Traction Management (PTM): active all-wheel drive system with an electronically variable, map-controlled multi-plate clutch, automatic brake differential (ABD) and anti-slip regulation (ASR)	Porsche Traction Management (PTM): active all-wheel drive system with an electronically variable, map-controlled multi-plate clutch, automatic brake differential (ABD) and anti-slip regulation (ASR)
Transmission	7-speed Porsche Doppelkupplung (PDK)	7-speed Porsche Doppelkupplung (PDK)
All-wheel torque distribution, front/rear	Variable	Variable

Engine	Macan GTS	Macan Turbo
Type	V6 twin-turbo engine	V6 twin-turbo engine
Number of cylinders	6	6
Valves/cylinders	4	4
Effective displacement	2,894cm ³	2,894cm ³
Max. power (DIN) of combustion engine at rpm	280kW (380PS) at 5,200–6,700	324kW (440PS) 5,700–6,600
Max. torque of combustion engine at rpm	520Nm at 1,750–5,000	550Nm at 1,900–5,600
Fuel grade	Super Plus (RON 98)	Super Plus (RON 98)
Transmission		
Drive	Porsche Traction Management (PTM): active all-wheel drive system with an electronically variable, map-controlled multi-plate clutch, automatic brake differential (ABD) and anti-slip regulation (ASR)	Porsche Traction Management (PTM): active all-wheel drive system with an electronically variable, map-controlled multi-plate clutch, automatic brake differential (ABD) and anti-slip regulation (ASR)
Transmission	7-speed Porsche Doppelkupplung (PDK)	7-speed Porsche Doppelkupplung (PDK)
All-wheel torque distribution, front/rear	Variable	Variable

Chassis	Macan	Macan S
Front axle	Fully independent double wishbone suspension	Fully independent double wishbone suspension
Rear axle	Self-tracking trapezoidal-link suspension	Self-tracking trapezoidal-link suspension
Steering	Power-assisted (electromechanical)	Power-assisted (electromechanical)
Turning circle diameter	11.96m	11.96m
Brakes	Four-piston aluminium monobloc fixed brake calipers at front; single-piston combination floating brake calipers at rear, internally vented discs, front and rear	Six-piston aluminium monobloc fixed brake calipers at front; single-piston combination floating brake calipers at rear, internally vented discs, front and rear
Brake discs, front axle diameter/thickness	345mm/30mm	360mm/36mm
Brake discs, rear axle diameter/thickness	330mm/22mm	330mm/22mm
Wheels	Front: 8 J × 18 ET 21, Rear: 9 J × 18 ET 21	Front: 8 J × 18 ET 21, Rear: 9 J × 18 ET 21
Tyres	Front: 235/60 R 18, Rear: 255/55 R 18	Front: 235/60 R 18, Rear: 255/55 R 18

Weights

Unladen weight (DIN)	1,795kg	1,865kg
Unladen weight (EC) ¹⁾	1,870kg	1,940kg
Permissible total weight	2,510kg	2,580kg
Maximum payload	715kg	715kg
Maximum permissible roof load with Porsche roof transport system	75kg	75kg
Maximum trailer load (braked)	2,000kg	2,400kg

Performance

Top speed	225km/h	254km/h
Acceleration 0–100km/h	6.7secs	5.3secs
Acceleration 0–100km/h (seconds) with Launch Control ²⁾	6.5secs	5.1secs
Acceleration 0–160km/h	17.0secs	13.0secs
Acceleration 0–160km/h with Launch Control ²⁾	17.3secs	12.8secs
Overtaking acceleration (80–120km/h)	4.9secs	3.6secs

Chassis	Macan GTS	Macan Turbo
Front axle	Fully independent double wishbone suspension	Fully independent double wishbone suspension
Rear axle	Self-tracking trapezoidal-link suspension	Self-tracking trapezoidal-link suspension
Steering	Power-assisted (electromechanical)	Power-assisted (electromechanical)
Turning circle diameter	11.96m	11.96m
Brakes	Six-piston aluminium monobloc fixed brake calipers at front; single-piston combination floating brake calipers at rear, internally vented discs, front and rear	Six-piston aluminium monobloc fixed brake calipers at front; single-piston combination floating brake calipers at rear, internally vented discs, front and rear
Brake discs, front axle diameter/thickness	360mm/36mm	390mm/38mm
Brake discs, rear axle diameter/thickness	330mm/22mm	356mm/28mm
Wheels	Front: 9 J × 20 ET 26, Rear: 10 J × 20 ET 19	Front: 9 J × 20 ET 26, Rear: 10 J × 20 ET 19
Tyres	Front: 265/45 R 20, Rear: 295/40 R 20	Front: 265/45 R 20, Rear: 295/40 R 20

Weights

Unladen weight (DIN)	1,910kg	1,945kg
Unladen weight (EC) ¹⁾	1,985kg	2,020kg
Permissible total weight	2,580kg	2,580kg
Maximum payload	670kg	635kg
Maximum permissible roof load with Porsche roof transport system	75kg	75kg
Maximum trailer load (braked)	2,400kg	2,400kg

Performance

Top speed	261km/h	270km/h
Acceleration 0–100km/h	4.9secs	4.5secs
Acceleration 0–100km/h (seconds) with Launch Control ²⁾	4.7secs	4.3secs
Acceleration 0–160km/h	11.6secs	10.5secs
Acceleration 0–160km/h with Launch Control ²⁾	11.4secs	10.3secs
Overtaking acceleration (80–120km/h)	3.3secs	2.9secs

1) Weight is calculated in accordance with the relevant EC Directives and is valid for vehicles with standard specification only. Optional equipment increases this figure. The figure given includes 75kg for the driver.

2) In conjunction with the optional Sport Chrono Package.

Volumes	Macan	Macan S	Macan GTS	Macan Turbo
Luggage compartment capacity to top of rear bench seat	488 litres	488 litres	488 litres	488 litres
Luggage compartment capacity with rear bench seat folded down	1,503 litres	1,503 litres	1,503 litres	1,503 litres
Tank capacity	65 litres	65 litres	65 litres	75 litres
Dimensions				
Length	4,696mm	4,696mm	4,686mm	4,684mm
Width including (excluding) exterior mirrors	2,098mm (1,923mm)	2,098mm (1,923mm)	2,098mm (1,926mm)	2,098mm (1,926mm)
Height (including roof rails)	1,624mm (1,630mm)	1,624mm (1,630mm)	1,599mm (1,615mm)	1,624mm (1,630mm)
Wheelbase	2,807mm	2,807mm	2,807mm	2,807mm
Approach angle (rear)	16.9° (23.6°)	16.9° (23.6°)	21.5° (22.1°)	23.8° (23.6°)
Breakover angle	16.9°	16.9°	14.9°	16.9°
Maximum fording depth with standard suspension (DIN unladen)	300mm	300mm	285mm	300mm
Ground clearance with standard suspension (DIN unladen)	205mm	205mm	190mm	205mm

Fuel consumption/emissions ^{1)/efficiency class²⁾}	Macan	Macan S	Macan GTS	Macan GTS	Macan Turbo	Macan Turbo
	Tyre class C	–	Tyre class C ³⁾	Tyre class B/C ⁴⁾	Tyre class C ³⁾	Tyre class B/C ⁴⁾
Urban in l/100km (NEDC)	9.5	11.4	12.1	12.1	11.7	11.6
Extra urban in l/100km (NEDC)	7.4	7.5	8.0	8.0	8.3	8.2
Combined in l/100km (NEDC)	8.2	8.9	9.6	9.5	9.6	9.5
CO ₂ emissions combined in g/km	186	204	218	216	218	216
Particulate filter	Yes	Yes	Yes	Yes	Yes	Yes
Emissions standard	Euro 6d ISC-FCM	Euro 6d ISC-FCM	Euro 6d ISC-FCM	Euro 6d ISC-FCM	Euro 6d ISC-FCM	Euro 6d ISC-FCM
Efficiency class (Germany) ²⁾	D	D	E	–	E	–

1) Data determined in accordance with the measurement method required by law. Since 01 September 2017 certain new cars have been type approved in accordance with the Worldwide Harmonised Light Vehicles Test Procedure (WLTP), a more realistic test procedure to measure fuel/electricity consumption and CO₂ emissions. From 01 September 2018, the WLTP replaced the New European Driving Cycle (NEDC). Due to the more realistic test conditions, the fuel/electricity consumption and CO₂ emission values determined in accordance with the WLTP will, in many cases, be higher than those determined in accordance with the NEDC. This may lead to corresponding changes in vehicle taxation from 01 September 2018. You can find more information on the difference between WLTP and NEDC at www.porsche.com/wltp. Currently, we are still obliged to provide the NEDC values, irrespective of the testing method used. The additional reporting of the WLTP values is voluntary until their obligatory use. As far as new cars (which are type approved in accordance with the WLTP) are concerned, the NEDC values will therefore be derived and stated from the WLTP values during the transition period. To the extent that NEDC values are given as ranges, these do not relate to a single, individual car and do not constitute part of the offer. They are intended solely as a means of comparing different types of vehicle. Extra features and accessories (attachments, tyre formats etc.) can change relevant vehicle parameters such as weight, rolling resistance and aerodynamics and, in addition to weather and traffic conditions, as well as individual handling, can affect the fuel consumption, electricity consumption, CO₂ emissions and performance values of a car.

2) Valid in the countries listed only.

3) Data does not apply to Denmark, France, Sweden, Iceland, Switzerland, Austria, Finland, the Netherlands, Norway, Belgium, Malta and Cyprus.

4) Data only applies to Denmark, France, Sweden, Iceland, Switzerland, Austria, Finland, the Netherlands, Norway, Belgium, Malta and Cyprus.

Tyre type	Size	Energy efficiency class/ rolling resistance	Wet grip class	External rolling noise* (class)	External rolling noise (dB)
Summer tyres	235/60 R 18	C	A		73–71
	255/55 R 18	C	A		73–71
	235/55 R 19	C–B	A		71–69
	255/50 R 19	C–B	B–A		72–70
	265/45 R 20	C	B–A		71–67
	295/40 R 20	C–B	B–A		71–69
	265/40 R 21	C	B–A		72–71
	295/35 R 21	C–B	B–A		74–71

For logistical and technical reasons relating to the production process, we are unable to accept orders for a particular make of tyre.

* Quiet rolling noise, Moderate rolling noise, Loud rolling noise.



Living life to the fullest. And always in the thick of things. On the road and on the Internet. Easy connectivity to social networks will maintain your flexibility – wherever you are.

www.porsche.com/macan



www.youtube.com/porsche



www.facebook.com/porsche



www.twitter.com/porsche



www.pinterest.com/porsche



www.instagram.com/porsche





© Dr. Ing. h.c. F. Porsche AG, 2020

All text, images and other information in this catalogue are subject to the copyright of Dr. Ing. h.c. F. Porsche AG.

Any reproduction, duplication or other use is prohibited without the prior written consent of Dr. Ing. h.c. F. Porsche AG.

Dr. Ing. h.c. F. Porsche AG supports the use of paper from sustainable forests. This paper was printed with mineral oil-free inks and is certified in accordance with the strict regulations of the FSC® (Forest Stewardship Council®).

Porsche, the Porsche Crest, 911, 918 Spyder, Macan, PCCB, PCM, PDK, PSM, Tequipment and other marks are registered trademarks of Dr. Ing. h.c. F. Porsche AG.

Dr. Ing. h.c. F. Porsche AG
Porscheplatz 1
70435 Stuttgart
Germany
www.porsche.com

Effective from: 09/2020
Printed in Germany
WSLA2101000220 EN/WW

