

# LBX



 **LEXUS**  
EXPERIENCE AMAZING

"Aiming to overturn the preconception that 'small is inferior', we have created an electrified luxury car that's sublimely natural to drive with a design that's both elegant and cool."

KUNIHICO ENDO, LBX CHIEF ENGINEER

## EVERYTHING BUT ORDINARY

THE EXTRAORDINARY NEW LEXUS LBX BREAKS THE LUXURY CAR MOULD, WITH A PREMIUM YET SHARP DESIGN AND CHOICE OF FOUR STUNNING ATMOSPHERES.

Because it's always been that way doesn't mean it should stay that way. That was our mindset when creating the LBX electrified compact SUV. A Lexus through and through, this car is crafted to defy convention. Showcasing standout looks, its super-refined yet fun to drive performance and class-redefining luxury turn the perception of the compact car on its head.

### RANGE OF EXTERIOR AND INTERIOR STYLES

Firstly it is more than one car. The seven grades feature five distinct styles or atmospheres allowing you to choose an LBX that best fits your lifestyle. Each grade features different combinations of wheels, exterior paint and interior upholstery.

### BOLD LEXUS SPINDLE DESIGN, LARGE 18" WHEELS\*

In city streets, the new LBX excites from the moment you set eye on it. Its sculpted proportions and vibrant lines give pure enjoyment from every angle. Witness its new Lexus spindle design, 18" alloys and vibrant Lexus rear styling. Walk away and you'll notice the compact cabin design, prominent wings and bi-tone roof with black C-pillar.

### FLAGSHIP TECHNOLOGY, UNDENIABLY LEXUS

Under its aerodynamic skin, the LBX is powered by a pioneering next-generation Lexus Self-Charging Hybrid which lets you drive in EV mode for up to 50% of the time. On board you'll discover features normally only offered on flagship models, like the pioneering Lexus Safety System + and 12.3" Tazuna cockpit\*.

In so many ways, our designers, engineers and Takumi masters have created a full-blooded Lexus in a compact car format.

\* Specifications will vary by model.



## EXQUISITELY CRAFTED FOR YOU

CREATED TO BE DIFFERENT, WITH ITS JAPANESE  
OMOTENASHI DESIGN AND TAKUMI CRAFTSMANSHIP,  
THE LBX IS VERY MUCH A LEXUS AT HEART.

**TAKUMI CRAFTSPEOPLE WITH OVER 15 YEARS OF EXPERIENCE MAKES IT A LEXUS**  
The sense of luxury here extends beyond the sumptuous leather upholstery and hi-tech equipment. There's luxury in the craftsmanship that is all around you. This is the work of the Takumi - the famed Lexus artisans who pour over every centimetre of your LBX to ensure the finished product is exquisitely finished. Honed over at least 15 years, their commitment to quality is what makes this car a Lexus. Witness the fine detail in the seat stitching, the Tsuyasumi woodgrain ornamentation and the intricate pattern which adorns the cup holder area, with a shiny charcoal effect creating a pleasing look with intricate wood-like veins.

### DISCOVER 'OMOTENASHI', THE ANCIENT JAPANESE ART OF HOSPITALITY

This is more than craftsmanship. This is 'Omotenashi', an ancient Japanese art of hospitality which seeks to anticipate a guest's needs even before they do. It is a spirit which guides all design at Lexus. Inside the LBX, you see it for example in the cabin illumination, conveyed through a choice of 64\* carefully selected colours, which express the emotions felt when witnessing beautiful natural phenomena. You see it too in vegan interiors\*, where seats, steering wheel, door trim and dashboard are free of animal-derived materials. And in "Hey Lexus" intelligent voice control, which even recognises who is talking.

### LEXUS DIGITAL KEY\*

The LBX's new Digital Key enables a smartphone to be used instead of a physical key. This allows access for up to 5 different LBX drivers or families using a single smartphone.

The new LBX truly is a mould-breaker. Exuding fresh thinking at every turn, yet firmly rooted in the rich luxury tradition that is Lexus.

\* Specifications will vary by model



## DISCOVER YOUR HAPPY PLACE

HERE SOPHISTICATED LUXURY AND HIGH-TECH SAFETY FUSE  
TO CREATE AN AMBIENCE OF WELL-BEING.

Your car is your sanctuary. Your personal space, your happy place. And inside the LBX Takumi 'based on Relax Atmosphere', like all LBX models, it's the attention to detail that wins you over. The deep, satisfying sound of the door closing. The allure of the semi-aniline leather\* with its distinctive stitching, conveying a level of premium quality that goes beyond your expectations and beyond the compact class. At the same time it endows the cabin with a calmness and glamour that reflect both your style and your mood.

### 13-SPEAKER MARK LEVINSON® SOUND, CLIMATE CONCIERGE

The mood won't be broken by excessive noise. That's thanks to the LBX's whisper-quiet Lexus Self-Charging Drive and premium design features like sound-damping on the wheel arches. This reduces both road and rain noise, as does insulation under the carpet. All the while Climate Concierge discharges minus-ion nanoe™ X particles\*, helping inhibit viruses and bacteria on one hand and moisturising your hair and skin on the other.

### CLASS-LEADING LEXUS SAFETY SYSTEM +

That is not all that relaxes you. The 3rd generation Lexus Safety System + gives you constant support, monitoring the road ahead, alerting you of impending danger and, where required, intervening in milliseconds to avoid a collision. LSS+ can help you avoid more accidents than previously, whilst the new Proactive Driving Assist supports you in driving more safely.

Meanwhile, the award-winning Safe Exit Assist\* prevents doors from opening when traffic like cars or bicycles is approaching too close from behind, while AHS headlights\* give you maximum visibility without blinding oncoming traffic.

### AN INTELLIGENT POINT OF VIEW

For easier driving in confined spaces, the Panoramic View Monitor\* creates a virtual 3D image of the car, displaying the scene from above, to assist close-quarter manoeuvring.

There's a special feeling inside the new LBX, a sense of well-being that you thought was the preserve of luxury sedans or large SUVs.

\* Specifications will vary by model.



## ELECTRIFIED TO BREAK FREE

IT'S TEMPTING TO JUST KEEP DRIVING IN THE LBX, ENJOYING THE CITY STREETS AND WINDING COUNTRY ROADS.

The LBX is not a car to be caged; from the ground up it was designed for agile and nimble driving around city streets. It wants to explore and inspires its driver to do the same - even before starting the car.

### ATHLETIC PROPORTIONS

Looking perfectly at home in the urban jungle, the LBX Premium Plus Design's (based on Emotion Atmosphere) bi-tone exterior, contrasting with the black cabin, hints at its sportiness from the off. So, too, do the dynamic proportions of that athletic body. It's compact, ideal for the city, yet with an impressive stance that's up for adventure. The black interior with red stitching adds to the sense of energy.

### NEXT GENERATION LEXUS SELF-CHARGING HYBRID

The promise of performance is more than skin deep. Under the bonnet, a next-generation Lexus Self-Charging Hybrid combines a highly efficient 1.5-litre petrol engine with a high-output electric motor. This delivers both dynamic performance on winding roads and peerless hybrid smoothness around urban streets.

### TAKUMI TESTED, SILKY SMOOTH

On the road, seated in the low driving position yet with excellent forward vision, you're seamlessly connected to a car that has a distinctly Lexus feel to it, with class-leading low levels of road noise, vibration and harshness. The smooth, responsive acceleration and cornering are the fruits of countless hours of fastidious effort from the Lexus engineers and Takumi craftspeople on the brand new Lexus Shimoyama testing track. The aerodynamics even extend underneath the car, with the dimpled undercover contributing to the LBX's excellent straight line stability during high-speed driving.

### ENJOY THE LEXUS DRIVING SIGNATURE

The very rigid body and low centre of gravity ensure confident handling, with the unwavering assurance that the LBX will steer exactly where you intend. Carefully tuned to deliver a Lexus Driving Signature of fun and comfortable performance, you'll sense the precise linearity of the controlled drive, braking and class-leading road holding.





## WHERE PREMIUM EMBRACES CASUAL

INSIDE THE LBX FEELS ROOMY AND FEATURES FUTURISTIC DESIGN, BESPOKE MATERIALS AND CLASS-LEADING EQUIPMENT LEVELS.

The interior design of the LBX Takumi Design (based on Cool Atmosphere) is instantly inviting - inviting you to be yourself, with a premium casual vibe as opposed to the restrictive formality that pervades most luxury cars. This is luxury that liberates. For a special look, you can customise your LBX to best match your own personality from an array of interior styles, tones and textures, alongside 8 colours on Takumi Design.

### DRIVER-FOCUSSED COCKPIT

The simplicity of elements like the instrument panel and the generous field of view lends the space an expansive feel that recalls a larger class of car. Behind the hand-stitched steering wheel, with your hand on the exquisitely finished centre console, you'll discover the driver-centred 'Tazuna' cockpit and its comforting embrace. For a luxury feeling of uncluttered space, controls such as the large Head-Up Display and 12.3" LCD instruments are precisely positioned to ensure relaxed concentration on the road ahead. Then, there's the varied ambient lighting from a palette of no fewer than 64 colours, imbuing the cabin with an ambience tailored to your mood.

### EXQUISITE INTERIORS

Beautifully purposeful and intuitive, inside the LBX's clean design contributes to a feeling of spaciousness throughout. Takumi Design has an ultrasuede/leather interior with distinctive Takumi-crafted copper stitching. Here the finest quality materials in the hands of experienced artisans create an environment of contemporary luxury that eschews outmoded ornamentation.

This is a new kind of Lexus luxury. Condensed design, with no compromises.



# WELCOME TO LEXUS LINK

A WORLD OF MULTIMEDIA AND BREAKTHROUGH CONNECTIVITY ENRICHES YOUR LIFE WITH THE LBX IN A MYRIAD OF WAYS.

With the new LBX, luxury goes beyond the sumptuous seats. Luxury is equally the peace of mind that comes from knowing you will reach your destination on time, in the most enjoyable, stress-free manner. And it is the seamless interaction of audio, navigation and online services for driver and passengers, enhancing each journey you make.

Welcome to Lexus Link Multimedia, created to complement our unique 'Omotenashi' service philosophy. With a 9.8" touchscreen, advanced voice recognition and smartphone integration, Lexus Link Multimedia offers an exceptionally fast and easy-to-use in-car experience. Meanwhile, the Lexus Link app on your smartphone helps you track journeys, schedule a service or even improve your driving style.

## SETTING THE NEW BENCHMARK FOR CONNECTIVITY

The clever Lexus Link+\* app boasts an array of services as standard. Driving Analytics tracks your journeys and highlights business trips. Find my Car guides you back to your car. You even receive notifications if you leave a window open or forget to switch off the headlights. From the comfort of your home, you can remotely defrost the windscreen, pre-set the air conditioning temperature or even lock and unlock your car.

## INTUITIVE 9.8" TOUCHSCREEN

Lexus Link Multimedia on the new LBX has been designed for exceptional speed and ease of use. At its heart is the 9.8" touchscreen. It's perfectly positioned for easy interaction. As well as accessing information like navigation, audio and climate control, you can also display your smartphone\*\* apps via Android Auto® or wireless Apple CarPlay\*\*\*.

## LEXUS VOICE ASSISTANT

Artificial Intelligence and the cloud work together in the Lexus Voice Assistant, which spares you grappling with buttons while you're concentrating on the road ahead. The system understands natural language and the context of statements such as "I'm hungry" or "I'm cold" and can even recognise which passenger is speaking. Without taking your hands off the wheel, Lexus Voice Assistant allows you to interact in more than 100 different ways across phone, navigation, audio, vehicle controls such as AC or seats, and cloud.

\* Lexus Link+ available as of October 2023.  
\*\* Compatible smartphones only.  
\*\*\* Apple CarPlay is a trademark of Apple Inc.

Please note: Specifications will vary by model.

## LINE-UP

### URBAN

#### Equipment Highlights:

- LSS+ 3
- 17" Alloy Wheels
- Premium fabric upholstery
- Manually adjustable front seats
- LED Headlights with Automatic High Beam (AHB)
- 7" Digital Instrument Binnacle
- Front and rear Parking Sensors
- Lexus Link Connect with 9.8" Touchscreen
- Wireless Apple CarPlay and wired Android Auto
- Front USB
- 6-Speaker Audio System
- Dual-zone automatic air conditioning
- Power fold wing mirrors
- Rear-view camera
- E-latch

### PREMIUM

#### Equipment Highlights (In addition to Urban):

- Single colour ambient lighting
- Tahara Synthetic Leather Upholstery
- Lumbar support for driver seat
- Heated front seats
- Rear privacy glass
- Wireless smartphone charger
- Pre-collision system with driver monitor
- Rear side monitor
- Blind Spot Monitor and Safe Exit Assist
- Auto dipping (electrochromic) rear view mirror
- Full colour coded bumpers
- Rain sensing wipers
- Camera washer

### PREMIUM PLUS

#### Equipment Highlights (In addition to Premium):

- High-Gloss 18" Alloy Wheels
- Power Back Door
- Nanoe-X Technology
- 12.3" Digital Instrument Binnacle
- Head Up Display
- Touch Sensor Buttons on Steering Wheel
- Front and rear smart entry
- Front and rear USB

### PREMIUM PLUS DESIGN

#### Equipment Highlights (In addition to Premium Plus):

- Bi-tone exterior finish
- Machined 18" Alloy Wheels
- Perforated Synthetic Leather Upholstery with red stitching







## LINE-UP

### TAKUMI

#### Equipment Highlights (In addition to Premium Plus Design):

- Multi-Colour Ambient Lighting
- Driver power adjustable seat with memory
- Semi-Aniline Leather Upholstery
- Intelligent Park Assist
- LED Headlights with Adaptive High-Beam System (AHS)
- Cornering lights
- LED front fog lights
- Advanced Safety Pack including:
  - Panoramic View Monitor (PVM)
  - Lane Change Assist (LCA)
  - Lane Trace Assist (LTA)
  - Front Cross Traffic Alert with Auto-Brake (FCTAB)
- 13-Speaker Mark Levinson Sound System
- Active Noise Control
- Cold Area Pack including:
  - Heated steering wheel
  - Windscreen de-icer
- Sequential shift and paddles
- Digital Key - 1 year subscription

#### OPTION

- E FOUR

### TAKUMI DESIGN

#### Equipment Highlights (In addition to Takumi):

- Bi-tone exterior finish
- Machined 18" Alloy Wheels
- Leather & Ultrasuede Upholstery

#### OPTION

- E FOUR

### ORIGINAL EDITION

#### Equipment Highlights (In addition to Takumi Design):

- Matt Black 18" Alloy Wheels
- C-Pillar Decal
- Bumper inserts
- External badging
- Unique colour: Sonic Copper Bi-tone

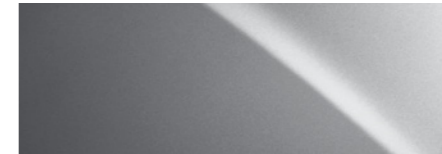


COLOURS | EXTERIOR

**SONIC WHITE** | 085



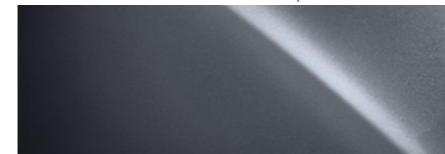
**SILVER** | 1F7



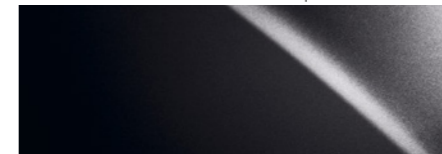
**CEMENT GREY** | 1H5



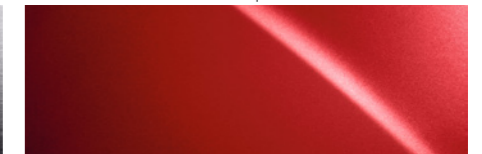
**SONIC GREY** | 1L1



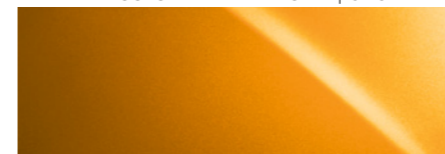
**ECLIPSE BLACK** | 209



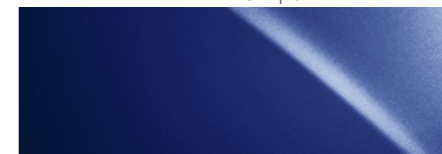
**RUBY** | 3U5



**PASSIONATE YELLOW<sup>1</sup>** | 5A3



**DARK BLUE** | 8W7



**SONIC WHITE /  
ASTRAL BLACK<sup>2</sup>** | 2YM



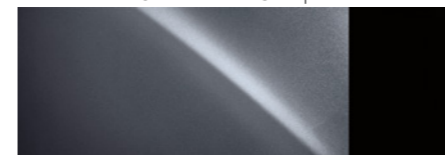
**SILVER /  
ASTRAL BLACK<sup>2</sup>** | 2LB



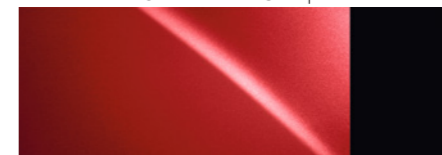
**CEMENT GREY /  
ASTRAL BLACK<sup>2</sup>** | 2YN



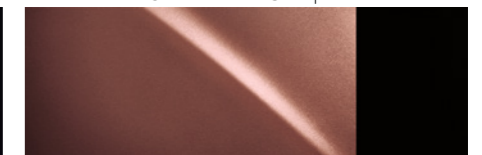
**SONIC GREY /  
ASTRAL BLACK<sup>2</sup>** | 2YH



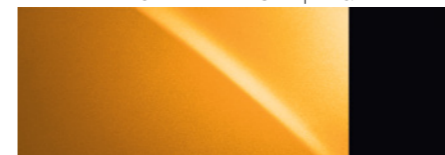
**RUBY /  
ASTRAL BLACK<sup>2</sup>** | 2TB



**SONIC COPPER /  
ASTRAL BLACK<sup>2</sup>** | 2YF



**PASSIONATE YELLOW /  
ASTRAL BLACK<sup>2</sup>** | 2PQ



**DARK BLUE /  
ASTRAL BLACK<sup>2</sup>** | 2VT



<sup>1</sup> Solid colour.

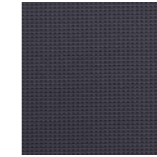
<sup>2</sup> Bi-tone bodycolours are standard on Emotion and Cool atmospheres, and not selectable on any other grades. Astral Black and Passionate Yellow are solid colours. Sonic copper only available on Original Edition.

Please note: due to printing variances, actual paintwork colours may vary slightly from those illustrated.



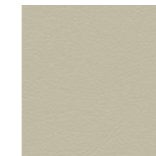
COLOURS | INTERIOR

**FABRIC<sup>1</sup>**

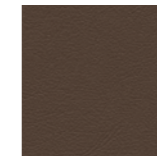


Greyscale

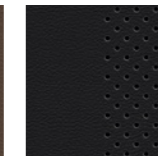
**TAHARA SYNTHETIC LEATHER<sup>2</sup>**



Ammonite Sand

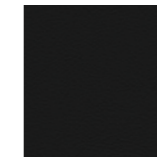


Forest Brown



Black<sup>3</sup>

**SEMI-ANILINE LEATHER<sup>4</sup>**

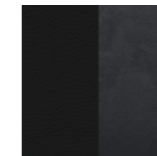


Black



Saddle Tan

**LEATHER TRIMMED ULTRASUEDE<sup>5</sup>**



Black & Dark  
Grey

<sup>1</sup> Greyscale fabric is standard on Urban grade.

<sup>2</sup> Tahara upholstery is standard on Premium and Premium Plus grades

<sup>3</sup> Perforated Tahara upholstery in Black with Red stitching is standard on Premium Plus Design grade and optionally available on Premium and Premium Plus grades

<sup>4</sup> Semi-aniline leather is standard on Takumi grade

<sup>5</sup> Leather and Ultrasuede upholstery in Black & Dark Grey with Copper stitching is standard on Takumi Design grade. An exclusive variant with Black stitching is standard on Original Edition

## TECHNICAL DATA

<b>ENGINE</b>		<b>LBX FWD (AWD)</b>
Capacity (cm <sup>3</sup> )	1490	
Cylinders / Valves	L3 / 12	
<b>ELECTRIC MOTOR</b>		
Type	AC synchronous, permanent magnet	
<b>TRANSMISSION</b>		
Type	Electronic-Continuously Variable Transmission	
Drive	Front-Wheel Drive (E-FOUR)	
<b>TOTAL SYSTEM OUTPUT<sup>1</sup></b>		
Total power (DIN hp)	136	
Total power (kW)	100	
Maximum torque (Nm)	185	
<b>PERFORMANCE</b>		
Acceleration 0-62 mph (0-100 kph)	9.6	
<b>FUEL CONSUMPTION<sup>2</sup> (mpg)</b>		
Combined	60.1-65.7 (57.6-62.8)	
<b>CO<sub>2</sub> EMISSIONS<sup>2</sup> (g/km)</b>		
Combined	105 -109 g/km (AWD 115)	
<b>EMISSION STANDARD<sup>2</sup></b>		
Euro Class	EURO 6d-ISC-FCM	
<b>WEIGHT (kg)</b>		
Gross vehicle	1755 (1820)	
Kerb weight (min. - max.)	1280 - 1350 (1365 - 1415)	
<b>DIMENSIONS</b>		
Length (mm)	4190	
Width (mm)	1825	
Height (mm)	1545	

<sup>1</sup> Combined engine and electric motor(s).

<sup>2</sup> The fuel consumption and CO<sub>2</sub> values are measured in a controlled environment on a representative production model, in accordance with the requirements of the new WLTP European Regulation EC 2017/1151 and its applicable amendments. For each individual vehicle configuration, the final fuel consumption and CO<sub>2</sub> values may be calculated based on the ordered optional equipment. The fuel consumption and CO<sub>2</sub> values of your vehicle may vary from those measured or calculated values, as driving behaviour as well as other factors (such as road conditions, traffic, vehicle condition, tyre pressure, load, number of passengers, etc.) have an influence on a car's fuel consumption and CO<sub>2</sub> emissions. For more information regarding the new WLTP test method, please visit: [www.lexus.eu/wltp#nedc](http://www.lexus.eu/wltp#nedc)  
All technical figures, including CO<sub>2</sub> emissions and fuel consumption are target values subject to homologation.

All figures listed are preliminary, tentative values subject to change without notice. Specifications shown in this brochure are based upon the latest available information at the time of printing. Further technical data, including any updates, can be found at [www.lexus.eu](http://www.lexus.eu).



## BE OUR GUEST

### HOW WE TREAT OUR CUSTOMERS IS GUIDED BY AN ANCIENT JAPANESE PHILOSOPHY OF HOSPITALITY.

Translated from the Japanese as 'hospitality and polite service', Omotenashi is about much more than excellence of service; it is an ancient concept centred around anticipating the needs of another, even before they arise. Omotenashi influences how we design and engineer our cars at Lexus, and equally how we treat you, the Lexus owner. Not just at the point of sale but over the life of your car. We want you to feel valued in every interaction you have with us. To feel more than a customer.

Whether as a private or fleet driver, you'll experience Omotenashi each time you visit our showrooms. In the warm reception on hand from friendly staff intent on welcoming you as if you were a guest in their home. In the inviting atmosphere and impressive facilities of the lounge, where you can avail of refreshments, catch up on news, enjoy high-speed Internet or carry on with your work. And in the knowledge that our Lexus technicians are working with precision and efficiency to get you back on the road with minimum interruption to your day.

#### ADDITIONAL BENEFITS

##### THREE YEARS' FREE LEXUS ROADSIDE ASSISTANCE

Whatever the situation, when you're driving your Lexus, we're just one call away from expert support at the roadside, 24 hours a day, every day of the year. Free for three years from initial purchase of a new vehicle, 24 hour a day, 365 days a year assistance anywhere in the UK. Home Start – One in four breakdowns happen at the home address. Home Start allows you to enjoy all the benefits of Lexus Roadside Assistance from your home address. Personal assistance – Lexus Roadside Assistance is designed to look after you – not just your vehicle. So even if you are a passenger in someone else's car you can still receive Lexus Roadside Assistance. Replacement vehicle – A replacement vehicle will be provided free of charge (excluding petrol and other consumables) for up to three

days, provided we have taken your vehicle to a Lexus Centre for repairs following a breakdown. Hotel accommodation – If a replacement vehicle is unavailable, we will arrange a hotel for you and your family for up to £150 per person to a maximum of £500, for one night. Onward travel – If a replacement vehicle is unavailable and you would like to make your own travel arrangements following a breakdown, we will reimburse the cost of this up to £150 per person, to a maximum of £500. European travel – If you travel across Europe, your Roadside Assistance will travel with you, whether you are driving your Lexus or another car. Medical assistance – If the driver of the car is certified ill, we will take you and your passengers to any single destination in the UK. Lost or broken keys – If you lose or break your keys, Lexus Roadside Assistance will arrange for recovery of your vehicle to a local Lexus Centre. You will be responsible, however, for the cost of replacement keys.

#### MANUFACTURER WARRANTY

Comprehensive – Any defect that is attributable to a manufacturing or assembly defect under normal use is covered by your warranty. This provision applies for a period of 3 years or 60,000 miles, whichever comes first, with no mileage limitation for the first year. Surface rust and paintwork – The warranty offers 3 years of cover for surface rust and paint defects appearing on any of the painted body panels due to a fault in material or workmanship. There is no mileage restriction on this. Corrosion perforation – 12 years of coverage is provided against bodywork perforation (i.e. any holes through the bodywork from inside to outside) due to corrosion that is attributable to faults in material or workmanship. Again, there is no mileage restriction. – "Bodywork" is taken to mean any original Lexus sheet metal body panel, including such parts as the engine bonnet, doors, boot lid and floor panel, but excluding parts attached to the body, such as mouldings, bumpers and hinges.

#### GET UP TO 10 YEARS/100,000 MILES LEXUS WARRANTY\*

Every new Lexus comes with a 3-year manufacturer's warranty followed by a 12-months / 10,000 mile additional warranty, with every qualifying service.

\* Terms and conditions apply. For full details, please ask your official Lexus Centre, or visit [lexus.co.uk/lexus-warranty](http://lexus.co.uk/lexus-warranty)



## DISCOVER MORE ONLINE

Find out more about the new LBX and even reserve your car online. Take time to explore which equipment grade best suits your lifestyle, learn about our world-class service and finance offerings and sign up to our regular newsletter. If you're interested in how the new LBX feels to drive, you can also book a test drive online with your local Lexus Retailer.

[www.lexus.co.uk/new-cars/lbx-world-premiere](http://www.lexus.co.uk/new-cars/lbx-world-premiere)

© 2023 Lexus UK reserves the right to alter any details of specifications and equipment without notice. Details of specifications and equipment are also subject to change to suit local conditions and requirements. Please enquire at your local Lexus Authorised Retailer of any such changes that might be required for your area.

Note: vehicles pictured and specifications detailed in this brochure may vary from models and equipment available in your area. Vehicle body colour might differ slightly from the photos in this brochure.

For further information please visit our website: [www.lexus.co.uk](http://www.lexus.co.uk)

Taking care of the environment is a priority for Lexus. We take many measures to ensure that during the lifecycles of our vehicles - from design, production, distribution, sales and service to end-of-life - their environmental impact is minimised. Your retailer will be happy to provide more information on end-of-life vehicle requirements.

September 2023

 **LEXUS**  
EXPERIENCE AMAZING